

## Imipramine Blue chloride

### Chemical Properties

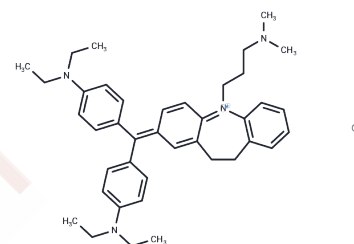
CAS No. :

Formula: C<sub>40</sub>H<sub>51</sub>ClN<sub>4</sub>

Molecular Weight: 623.31

Storage: Powder: -20°C for 3 years | In solvent: -80°C for 1 year

Actual storage temperature shall be subject to the COA.



### Biological Description

Description	Imipramine Blue chloride is an effective anti-invasive agent capable of inhibiting glioma invasion. It suppresses the production of reactive oxygen species (reactive oxygen species) mediated by NADPH oxidase.
Targets(IC50)	Reactive Oxygen Species

### Preparing Stock Solutions

	1mg	5mg	10mg
1 mM	1.6043 mL	8.0217 mL	16.0434 mL
5 mM	0.3209 mL	1.6043 mL	3.2087 mL
10 mM	0.1604 mL	0.8022 mL	1.6043 mL
50 mM	0.0321 mL	0.1604 mL	0.3209 mL

Please select the appropriate solvent to prepare the stock solution, according to the solubility of the product in different solvents. Please use it as soon as possible.

Note: The dilution table applies only to solid products. For liquid products, please calculate the stock solution based on the stated concentration and/or density.

**Inhibitor · Natural Compounds · Compound Libraries · Recombinant Proteins**

This product is for Research Use Only · Not for Human or Veterinary or Therapeutic Use

Tel:781-999-4286 E\_mail:info@targetmol.com Address:34 Washington Street,Wellesley Hills,MA 02481