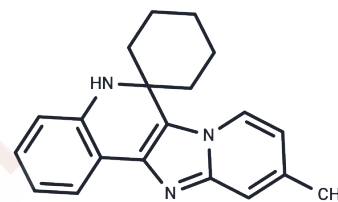


AChE/BChE-IN-24

Chemical Properties

CAS No. :	3053509-06-8
Formula:	C ₂₀ H ₂₁ N ₃
Molecular Weight:	303.4
Storage:	Powder: -20°C for 3 years In solvent: -80°C for 1 year Actual storage temperature shall be subject to the COA.



Biological Description

Description	AChE/BChE-IN-24 (compound 5k) functions as a neuroprotective agent by inhibiting acetylcholinesterase. It targets both AChE and BChE, demonstrating IC ₅₀ values of 16.38 μM and 10.44 μM, respectively.
Targets(IC ₅₀)	Mitochondrial Metabolism, Cholinesterase (ChE)

Preparing Stock Solutions

	1mg	5mg	10mg
1 mM	3.296 mL	16.4799 mL	32.9598 mL
5 mM	0.6592 mL	3.296 mL	6.592 mL
10 mM	0.3296 mL	1.648 mL	3.296 mL
50 mM	0.0659 mL	0.3296 mL	0.6592 mL

Please select the appropriate solvent to prepare the stock solution, according to the solubility of the product in different solvents. Please use it as soon as possible.

Note: The dilution table applies only to solid products. For liquid products, please calculate the stock solution based on the stated concentration and/or density.

Inhibitor · Natural Compounds · Compound Libraries · Recombinant Proteins

This product is for Research Use Only · Not for Human or Veterinary or Therapeutic Use

Tel: 781-999-4286 E_mail: info@targetmol.com Address: 34 Washington Street, Wellesley Hills, MA 02481