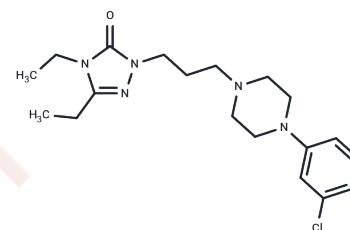


## Etoperidone

## Chemical Properties

CAS No. :	52942-31-1
Formula:	C <sub>19</sub> H <sub>28</sub> ClN <sub>5</sub> O
Molecular Weight:	377.91
Storage:	Powder: -20°C for 3 years   In solvent: -80°C for 1 year Actual storage temperature shall be subject to the COA.



## Biological Description

Description	Etoperidone is an antidepressant that acts as an orally active reuptake inhibitor for serotonin (serotonin) and noradrenaline (nor-adrenaline). It demonstrates specific binding affinities (K <sub>d</sub> ) for several receptors: 36 nM at the 5-HT <sub>2</sub> receptor, 38 nM at the α <sub>1</sub> -adrenergic receptor (α <sub>1</sub> -adrenergic receptor), 85 nM at the 5-HT <sub>1A</sub> receptor, and 570 nM at the α <sub>2</sub> -adrenergic receptor (α <sub>2</sub> -adrenergic receptor).
Targets(IC <sub>50</sub> )	5-HT Receptor, Adrenergic Receptor

## Preparing Stock Solutions

	1mg	5mg	10mg
1 mM	2.6461 mL	13.2307 mL	26.4613 mL
5 mM	0.5292 mL	2.6461 mL	5.2923 mL
10 mM	0.2646 mL	1.3231 mL	2.6461 mL
50 mM	0.0529 mL	0.2646 mL	0.5292 mL

Please select the appropriate solvent to prepare the stock solution, according to the solubility of the product in different solvents. Please use it as soon as possible.

Note: The dilution table applies only to solid products. For liquid products, please calculate the stock solution based on the stated concentration and/or density.

Inhibitor · Natural Compounds · Compound Libraries · Recombinant Proteins

This product is for Research Use Only · Not for Human or Veterinary or Therapeutic Use

Tel: 781-999-4286 E\_mail: info@targetmol.com Address: 34 Washington Street, Wellesley Hills, MA 02481