

MLEB-22043

Chemical Properties

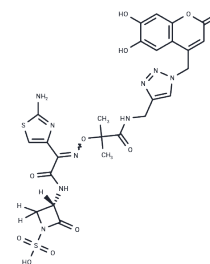
CAS No. :

Formula: C₂₅H₂₅N₉O₁₁S₂

Molecular Weight: 691.65

Storage: Powder: -20°C for 3 years | In solvent: -80°C for 1 year

Actual storage temperature shall be subject to the COA.



Biological Description

Description	MLEB-22043 is a synthetic siderophore-mono-cyclic β -lactam conjugate which enters bacteria through TonB-dependent transport proteins utilizing its siderophore component, subsequently exerting antibacterial activity via its β -lactam portion. This compound acts as a broad-spectrum antibiotic, exhibiting significant inhibitory activity against pathogens such as <i>Klebsiella pneumoniae</i> , <i>Escherichia coli</i> , <i>Acinetobacter baumannii</i> , and <i>Pseudomonas aeruginosa</i> .
Targets(IC50)	Antibiotic

Preparing Stock Solutions

	1mg	5mg	10mg
1 mM	1.4458 mL	7.2291 mL	14.4582 mL
5 mM	0.2892 mL	1.4458 mL	2.8916 mL
10 mM	0.1446 mL	0.7229 mL	1.4458 mL
50 mM	0.0289 mL	0.1446 mL	0.2892 mL

Please select the appropriate solvent to prepare the stock solution, according to the solubility of the product in different solvents. Please use it as soon as possible.

Note: The dilution table applies only to solid products. For liquid products, please calculate the stock solution based on the stated concentration and/or density.

Inhibitor · Natural Compounds · Compound Libraries · Recombinant Proteins

This product is for Research Use Only · Not for Human or Veterinary or Therapeutic Use

Tel:781-999-4286 E_mail:info@targetmol.com Address:34 Washington Street,Wellesley Hills,MA 02481