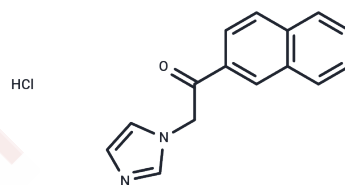


Nafimidone hydrochloride

Chemical Properties

CAS No. :	70891-37-1
Formula:	C ₁₅ H ₁₃ ClN ₂ O
Molecular Weight:	272.73
Storage:	Powder: -20°C for 3 years In solvent: -80°C for 1 year Actual storage temperature shall be subject to the COA.



Biological Description

Description	Nafimidone hydrochloride, an antiepileptic agent, inhibits acetylcholinesterase, protects neurons, and ameliorates cognitive decline. It is utilized in epilepsy research.
Targets(IC50)	Cholinesterase (ChE)

Preparing Stock Solutions

	1mg	5mg	10mg
1 mM	3.6666 mL	18.3332 mL	36.6663 mL
5 mM	0.7333 mL	3.6666 mL	7.3333 mL
10 mM	0.3667 mL	1.8333 mL	3.6666 mL
50 mM	0.0733 mL	0.3667 mL	0.7333 mL

Please select the appropriate solvent to prepare the stock solution, according to the solubility of the product in different solvents. Please use it as soon as possible.

Note: The dilution table applies only to solid products. For liquid products, please calculate the stock solution based on the stated concentration and/or density.

Inhibitor · Natural Compounds · Compound Libraries · Recombinant Proteins

This product is for Research Use Only · Not for Human or Veterinary or Therapeutic Use

Tel:781-999-4286 E_mail:info@targetmol.com Address:34 Washington Street,Wellesley Hills,MA 02481