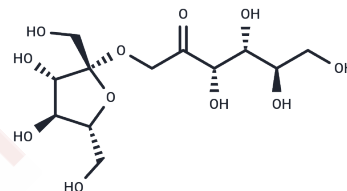


## Inulobiose

## Chemical Properties

|                   |   |
|-------------------|---|
| CAS No. :         | 470-58-6  |
| Formula:          | C <sub>12</sub> H <sub>22</sub> O <sub>11</sub>   |
| Molecular Weight: | 342.3   |
| Storage:          | Powder: -20°C for 3 years   In solvent: -80°C for 1 year<br>Actual storage temperature shall be subject to the COA. |



## Biological Description

|                            |   |
|----------------------------|---|
| Description                | Inulobiose, a difructan disaccharide isolated from Pistacia vera L., demonstrates inhibitory effects on $\alpha$ -glycosidase ( $\alpha$ -glycosidase) and $\alpha$ -amylase ( $\alpha$ -amylase) activities, with IC <sub>50</sub> values of 1.87 and 40.72 mg/mL respectively. It is utilized in research related to diabetes and glomerular filtration rate testing. |
| Targets(IC <sub>50</sub> ) | Glucosidase,Amylase,glycosidase   |

## Preparing Stock Solutions

|       | 1mg       | 5mg        | 10mg       |
|-------|-----------|------------|------------|
| 1 mM  | 2.9214 mL | 14.6071 mL | 29.2141 mL |
| 5 mM  | 0.5843 mL | 2.9214 mL  | 5.8428 mL  |
| 10 mM | 0.2921 mL | 1.4607 mL  | 2.9214 mL  |
| 50 mM | 0.0584 mL | 0.2921 mL  | 0.5843 mL  |

Please select the appropriate solvent to prepare the stock solution, according to the solubility of the product in different solvents. Please use it as soon as possible.

Note: The dilution table applies only to solid products. For liquid products, please calculate the stock solution based on the stated concentration and/or density.

**Inhibitor · Natural Compounds · Compound Libraries · Recombinant Proteins**

This product is for Research Use Only · Not for Human or Veterinary or Therapeutic Use

Tel:781-999-4286 E\_mail:info@targetmol.com Address:34 Washington Street,Wellesley Hills,MA 02481