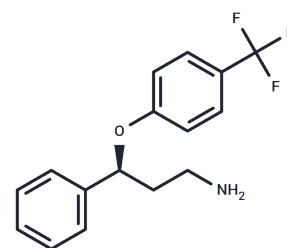


## (S)-Norfluoxetine

## Chemical Properties

CAS No. :	126924-38-7
Formula:	C <sub>16</sub> H <sub>16</sub> F <sub>3</sub> NO
Molecular Weight:	295.3
Storage:	Powder: -20°C for 3 years   In solvent: -80°C for 1 year Actual storage temperature shall be subject to the COA.



## Biological Description

Description	(S)-Norfluoxetine, the S enantiomer of Norfluoxetine, functions as a selective serotonin reuptake inhibitor. It enhances allopregnanolone levels and reduces aggression in socially isolated mice.
Targets(IC50)	Drug-Linker Conjugates for ADC,Serotonin Transporter

## Preparing Stock Solutions

	1mg	5mg	10mg
1 mM	3.3864 mL	16.9319 mL	33.8639 mL
5 mM	0.6773 mL	3.3864 mL	6.7728 mL
10 mM	0.3386 mL	1.6932 mL	3.3864 mL
50 mM	0.0677 mL	0.3386 mL	0.6773 mL

Please select the appropriate solvent to prepare the stock solution, according to the solubility of the product in different solvents. Please use it as soon as possible.

Note: The dilution table applies only to solid products. For liquid products, please calculate the stock solution based on the stated concentration and/or density.

Inhibitor · Natural Compounds · Compound Libraries · Recombinant Proteins

This product is for Research Use Only · Not for Human or Veterinary or Therapeutic Use

Tel:781-999-4286 E\_mail:info@targetmol.com Address:34 Washington Street,Wellesley Hills,MA 02481