

CL-13

Chemical Properties

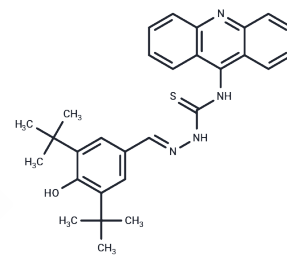
CAS No. :

Formula: C₂₉H₃₂N₄O₅

Molecular Weight: 484.66

Storage: Powder: -20°C for 3 years | In solvent: -80°C for 1 year

Actual storage temperature shall be subject to the COA.



Biological Description

| | |
|----------------------------|---|
| Description | CL-13 is an inhibitor of butyrylcholinesterase (BChE), exhibiting an IC ₅₀ of 1.15 μM and a selectivity index (SI) of 9.2 for acetylcholinesterase. It demonstrates antioxidative activity in SH-SY5Y cells with a DPPHEC ₅₀ of 47.01 μM and has the capacity to chelate metals involved in Aβ aggregation and/or oxidative stress, showing no neurotoxicity at concentrations up to 50 μM. CL-13 can also reverse scopolamine-induced cognitive impairments without affecting motor abilities in mice. |
| Targets(IC ₅₀) | Beta Amyloid,Cholinesterase (ChE) |

Preparing Stock Solutions

| | 1mg | 5mg | 10mg |
|-------|-----------|------------|-----------|
| 1 mM | 2.0633 mL | 10.3165 mL | 20.633 mL |
| 5 mM | 0.4127 mL | 2.0633 mL | 4.1266 mL |
| 10 mM | 0.2063 mL | 1.0317 mL | 2.0633 mL |
| 50 mM | 0.0413 mL | 0.2063 mL | 0.4127 mL |

Please select the appropriate solvent to prepare the stock solution, according to the solubility of the product in different solvents. Please use it as soon as possible.

Note: The dilution table applies only to solid products. For liquid products, please calculate the stock solution based on the stated concentration and/or density.

Inhibitor · Natural Compounds · Compound Libraries · Recombinant Proteins

This product is for Research Use Only · Not for Human or Veterinary or Therapeutic Use

Tel:781-999-4286

E_mail:info@targetmol.com

Address:34 Washington Street,Wellesley Hills,MA 02481