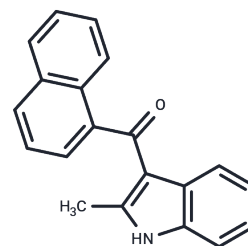


1'-Naphthoyl-2-methylindole

Chemical Properties

CAS No. :	80749-33-3
Formula:	C ₂₀ H ₁₅ NO
Molecular Weight:	285.34
Storage:	Powder: -20°C for 3 years In solvent: -80°C for 1 year Actual storage temperature shall be subject to the COA.



Biological Description

Description	1'-Naphthoyl-2-methylindole (Compound 88) acts as a cannabinoid mimic and an inhibitor of Win 55212-2, displaying a 34% inhibition of [3H]Win 55212-2 binding to cannabinoid receptors at a concentration of 3 μM.
Targets(IC50)	Cannabinoid Receptor

Preparing Stock Solutions

	1mg	5mg	10mg
1 mM	3.5046 mL	17.523 mL	35.0459 mL
5 mM	0.7009 mL	3.5046 mL	7.0092 mL
10 mM	0.3505 mL	1.7523 mL	3.5046 mL
50 mM	0.0701 mL	0.3505 mL	0.7009 mL

Please select the appropriate solvent to prepare the stock solution, according to the solubility of the product in different solvents. Please use it as soon as possible.

Note: The dilution table applies only to solid products. For liquid products, please calculate the stock solution based on the stated concentration and/or density.

Inhibitor · Natural Compounds · Compound Libraries · Recombinant Proteins

This product is for Research Use Only · Not for Human or Veterinary or Therapeutic Use

Tel:781-999-4286 E_mail:info@targetmol.com Address:34 Washington Street,Wellesley Hills,MA 02481