

ROS151

Chemical Properties

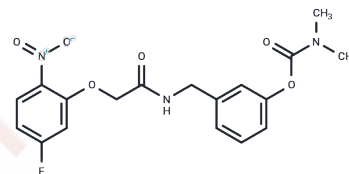
CAS No. :

Formula: C18H18FN3O6

Molecular Weight: 391.35

Storage: Powder: -20°C for 3 years | In solvent: -80°C for 1 year

Actual storage temperature shall be subject to the COA.



Biological Description

Description	ROS151 is an AChE inhibitor with IC50 values of 14 nM (hAChE), 1.68 μM (eqBChE), and 8.17 μM (hFAAH). Additionally, it acts as a chelating agent for Fe ³⁺ and Cu ²⁺ . ROS151 is utilized in research related to Alzheimer's disease.
Targets(IC50)	Cholinesterase (ChE),ROS

Preparing Stock Solutions

	1mg	5mg	10mg
1 mM	2.5553 mL	12.7763 mL	25.5526 mL
5 mM	0.5111 mL	2.5553 mL	5.1105 mL
10 mM	0.2555 mL	1.2776 mL	2.5553 mL
50 mM	0.0511 mL	0.2555 mL	0.5111 mL

Please select the appropriate solvent to prepare the stock solution, according to the solubility of the product in different solvents. Please use it as soon as possible.

Note: The dilution table applies only to solid products. For liquid products, please calculate the stock solution based on the stated concentration and/or density.

Inhibitor · Natural Compounds · Compound Libraries · Recombinant Proteins

This product is for Research Use Only · Not for Human or Veterinary or Therapeutic Use

Tel:781-999-4286 E_mail:info@targetmol.com Address:34 Washington Street,Wellesley Hills,MA 02481