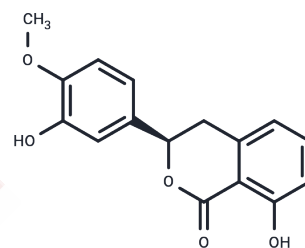


Phyllodulcin

Chemical Properties

CAS No. :	21499-23-0
Formula:	C ₁₆ H ₁₄ O ₅
Molecular Weight:	286.28
Storage:	Powder: -20°C for 3 years In solvent: -80°C for 1 year Actual storage temperature shall be subject to the COA.



Biological Description

Description	Phyllodulcin, an orally active sweetener discovered in <i>Hydrangea macrophylla</i> var. <i>thunbergii</i> , functions as a non-selective phosphodiesterase inhibitor that mitigates allergic reactions by suppressing the activation of lymphocytes. Additionally, it combats obesity through the regulation of leptin levels, genes associated with fat browning, and the hypothalamic BDNF-TrkB signaling pathway.
Targets(IC50)	PDE

Preparing Stock Solutions

	1mg	5mg	10mg
1 mM	3.4931 mL	17.4654 mL	34.9308 mL
5 mM	0.6986 mL	3.4931 mL	6.9862 mL
10 mM	0.3493 mL	1.7465 mL	3.4931 mL
50 mM	0.0699 mL	0.3493 mL	0.6986 mL

Please select the appropriate solvent to prepare the stock solution, according to the solubility of the product in different solvents. Please use it as soon as possible.

Note: The dilution table applies only to solid products. For liquid products, please calculate the stock solution based on the stated concentration and/or density.

Inhibitor · Natural Compounds · Compound Libraries · Recombinant Proteins

This product is for Research Use Only · Not for Human or Veterinary or Therapeutic Use

Tel:781-999-4286 E_mail:info@targetmol.com Address:34 Washington Street,Wellesley Hills,MA 02481