

Levodobutamine

Chemical Properties

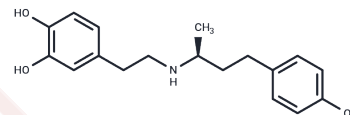
CAS No. : 61661-06-1

Formula: C₁₈H₂₃NO₃

Molecular Weight: 301.38

Storage: Powder: -20°C for 3 years | In solvent: -80°C for 1 year

Actual storage temperature shall be subject to the COA.



Biological Description

Description	Levodobutamine is a bioactive chemical.
Targets(IC50)	Others

Preparing Stock Solutions

	1mg	5mg	10mg
1 mM	3.3181 mL	16.5904 mL	33.1807 mL
5 mM	0.6636 mL	3.3181 mL	6.6361 mL
10 mM	0.3318 mL	1.659 mL	3.3181 mL
50 mM	0.0664 mL	0.3318 mL	0.6636 mL

Please select the appropriate solvent to prepare the stock solution, according to the solubility of the product in different solvents. Please use it as soon as possible.

Note: The dilution table applies only to solid products. For liquid products, please calculate the stock solution based on the stated concentration and/or density.

Reference

- Tian FS, Chen YH, Liang HY. Determination of dobutamine hydrochloride by enzymatic catalytic spectrofluorimetry. Luminescence. 2014 Feb;29(1):92-5. doi: 10.1002/bio.2509. Epub 2013 Apr 25. PubMed PMID: 23616473.
- Lau EMT, Vanderpool RR, Choudhary P, Simmons LR, Corte TJ, Argiento P, D'Alto M, Naeije R, Celermajer DS. Dobutamine stress echocardiography for the assessment of pressure-flow relationships of the pulmonary circulation. Chest. 2014 Oct;146(4):959-966. doi: 10.1378/chest.13-2300. PubMed PMID: 24626933.
- Ebade AA, Khalil MA, Mohamed AK. Levosimendan is superior to dobutamine as an inodilator in the treatment of pulmonary hypertension for children undergoing cardiac surgery. J Anesth. 2013 Jun;27(3):334-9. doi: 10.1007/s00540-012-1537-9. Epub 2012 Dec 9. PubMed PMID: 23223915.
- Levy B, Perez P, Perny J, Thivilier C, Gerard A. Comparison of norepinephrine-dobutamine to epinephrine for hemodynamics, lactate metabolism, and organ function variables in cardiogenic shock. A prospective, randomized pilot study. Crit Care Med. 2011 Mar;39(3):450-5. doi: 10.1097/CCM.0b013e3181ffe0eb. PubMed PMID: 21037469.

Inhibitor · Natural Compounds · Compound Libraries · Recombinant Proteins

This product is for Research Use Only · Not for Human or Veterinary or Therapeutic Use

Tel:781-999-4286 E_mail:info@targetmol.com Address:34 Washington Street,Wellesley Hills,MA 02481