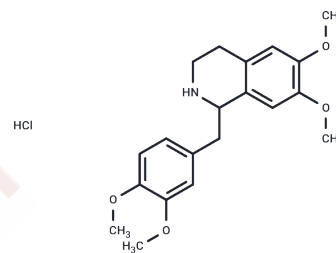


## Tetrahydropapaverine hydrochloride

## Chemical Properties

CAS No. :	6429-04-5
Formula:	C <sub>20</sub> H <sub>26</sub> ClNO <sub>4</sub>
Molecular Weight:	379.878
Storage:	Powder: -20°C for 3 years   In solvent: -80°C for 1 year Actual storage temperature shall be subject to the COA.



## Biological Description

Description	Tetrahydropapaverine hydrochloride (Norlaudanosine HCl) , an analogue of salsolinol and tetrahydropapaveroline, has neurotoxicity on dopamine neurons.
Targets(IC50)	Others,Hydroxylase
In vivo	In mouse mastocytoma P815 cells involved in serotonin production, Tetrahydropapaverine can inhibit serotonin biosynthesis (IC50: 7.5 μM) and reduce tryptophan hydroxylase activity (IC50: 5.7 μM).

## Solubility Information

Solubility	DMSO: 60 mg/mL (157.95 mM),Sonication is recommended. (< 1 mg/ml refers to the product slightly soluble or insoluble)
In vivo Formulation	10% DMSO+40% PEG300+5% Tween 80+45% Saline: 2 mg/mL (5.26 mM),Sonication is recommended. <i>Please add the solvents sequentially, clarifying the solution as much as possible before adding the next one. Dissolve by heating and/or sonication if necessary. Working solution is recommended to be prepared and used immediately. The formulation provided above is for reference purposes only. In vivo formulations may vary and should be modified based on specific experimental conditions.</i>

### Preparing Stock Solutions

---

	1mg	5mg	10mg
1 mM	2.6324 mL	13.1621 mL	26.3241 mL
5 mM	0.5265 mL	2.6324 mL	5.2648 mL
10 mM	0.2632 mL	1.3162 mL	2.6324 mL
50 mM	0.0526 mL	0.2632 mL	0.5265 mL

---

Please select the appropriate solvent to prepare the stock solution, according to the solubility of the product in different solvents. Please use it as soon as possible.

Note: The dilution table applies only to solid products. For liquid products, please calculate the stock solution based on the stated concentration and/or density.

#### Reference

- Kim EI, et al. Life Sci, 2004, 75(16), 1949-1957.  
Goto K, et al. Brain Res, 1997, 54(1-2), 260-268.

**Inhibitor · Natural Compounds · Compound Libraries · Recombinant Proteins**

This product is for Research Use Only · Not for Human or Veterinary or Therapeutic Use

Tel:781-999-4286 E\_mail:info@targetmol.com Address:34 Washington Street,Wellesley Hills,MA 02481