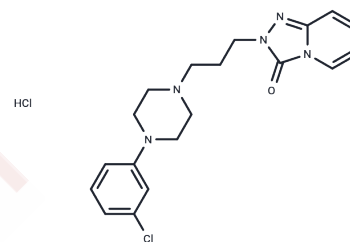


Trazodone hydrochloride

Chemical Properties

CAS No. :	25332-39-2
Formula:	C ₁₉ H ₂₃ Cl ₂ N ₅ O
Molecular Weight:	408.33
Storage:	Powder: -20°C for 3 years In solvent: -80°C for 1 year Actual storage temperature shall be subject to the COA.



Biological Description

Description	Trazodone hydrochloride (Trazodone HCl) is a serotonin uptake inhibitor that is used as an antidepressive agent. It has been shown to be effective in patients with major depressive disorders and other subsets of depressive disorders. It is generally more useful in depressive disorders associated with insomnia and anxiety.
Targets(IC50)	5-HT Receptor, Adrenergic Receptor, Histamine Receptor, Serotonin Transporter

Solubility Information

Solubility	H ₂ O: 8.2 mg/mL (20.08 mM), Sonication is recommended. DMSO: 33.33 mg/mL (81.63 mM), Sonication is recommended. (< 1 mg/ml refers to the product slightly soluble or insoluble)
In vivo Formulation	10% DMSO+40% PEG300+5% Tween 80+45% Saline: 1 mg/mL (2.45 mM), Sonication is recommended. <i>Please add the solvents sequentially, clarifying the solution as much as possible before adding the next one. Dissolve by heating and/or sonication if necessary. Working solution is recommended to be prepared and used immediately. The formulation provided above is for reference purposes only. In vivo formulations may vary and should be modified based on specific experimental conditions.</i>

Preparing Stock Solutions

	1mg	5mg	10mg
1 mM	2.449 mL	12.245 mL	24.490 mL
5 mM	0.4898 mL	2.449 mL	4.898 mL
10 mM	0.2449 mL	1.2245 mL	2.449 mL
50 mM	0.049 mL	0.2449 mL	0.4898 mL

Please select the appropriate solvent to prepare the stock solution, according to the solubility of the product in different solvents. Please use it as soon as possible.

Note: The dilution table applies only to solid products. For liquid products, please calculate the stock solution based on the stated concentration and/or density.

Reference

Marcoli M, et al. J Pharmacol Exp Ther. 2001 Dec; 299(3):1106-11.

Inhibitor · Natural Compounds · Compound Libraries · Recombinant Proteins

This product is for Research Use Only · Not for Human or Veterinary or Therapeutic Use

Tel:781-999-4286 E_mail:info@targetmol.com Address:34 Washington Street,Wellesley Hills,MA 02481