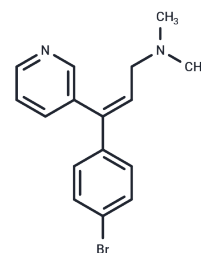


Zimelidine

Chemical Properties

CAS No. :	56775-88-3
Formula:	C16H17BrN2
Molecular Weight:	317.22
Storage:	Powder: -20°C for 3 years In solvent: -80°C for 1 year Actual storage temperature shall be subject to the COA.



Biological Description

Description	Zimelidine is a serotonin uptake inhibitor formerly used for depression, but was withdrawn worldwide because of the risk of Gullain-Barre syndrome associated with its use.
Targets(IC50)	Others,5-HT Receptor,Serotonin Transporter

Preparing Stock Solutions

	1mg	5mg	10mg
1 mM	3.1524 mL	15.7619 mL	31.5239 mL
5 mM	0.6305 mL	3.1524 mL	6.3048 mL
10 mM	0.3152 mL	1.5762 mL	3.1524 mL
50 mM	0.063 mL	0.3152 mL	0.6305 mL

Please select the appropriate solvent to prepare the stock solution, according to the solubility of the product in different solvents. Please use it as soon as possible.

Note: The dilution table applies only to solid products. For liquid products, please calculate the stock solution based on the stated concentration and/or density.

Reference

- Merideth CH, Feighner JP. A double-blind, controlled evaluation of zimeldine, imipramine and placebo in patients with primary affective disorders. *Acta Psychiatr Scand Suppl.* 1983;308:70-9. PubMed PMID: 6230897.
- Bengtsson BO, Wiholm BE, Myrhed M, Wålinder J. Adverse experiences during treatment with zimeldine on special licence in Sweden. *Int Clin Psychopharmacol.* 1994 Spring;9(1):55-61. PubMed PMID: 8195584.
- Bjorvatn B, Ursin R. Effects of zimeldine, a selective 5-HT reuptake inhibitor, combined with ritanserin, a selective 5-HT2 antagonist, on waking and sleep stages in rats. *Behav Brain Res.* 1990 Nov 30;40(3):239-46. PubMed PMID: 2149499.
- Hindmarch I, Subhan Z, Stoker MJ. The effects of zimeldine and amitriptyline on car driving and psychomotor performance. *Acta Psychiatr Scand Suppl.* 1983;308:141-6. PubMed PMID: 6230888.

Inhibitor · Natural Compounds · Compound Libraries · Recombinant Proteins

This product is for Research Use Only · Not for Human or Veterinary or Therapeutic Use

Tel:781-999-4286 E_mail:info@targetmol.com Address:34 Washington Street,Wellesley Hills,MA 02481