

Palmitone

Chemical Properties

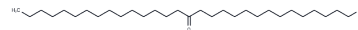
CAS No. : 502-73-8

Formula: C₃₁H₆₂O

Molecular Weight: 450.82

Storage: Powder: -20°C for 3 years | In solvent: -80°C for 1 year

Actual storage temperature shall be subject to the COA.



Biological Description

Description	Palmitone is a natural product exhibiting antigonorrhoeal activity.
Targets(IC50)	Others

Solubility Information

Solubility	DMSO: Soluble, Sonication is recommended. (< 1 mg/ml refers to the product slightly soluble or insoluble)
------------	--

Preparing Stock Solutions

	1mg	5mg	10mg
1 mM	2.2182 mL	11.0909 mL	22.1818 mL
5 mM	0.4436 mL	2.2182 mL	4.4364 mL
10 mM	0.2218 mL	1.1091 mL	2.2182 mL
50 mM	0.0444 mL	0.2218 mL	0.4436 mL

Please select the appropriate solvent to prepare the stock solution, according to the solubility of the product in different solvents. Please use it as soon as possible.

Note: The dilution table applies only to solid products. For liquid products, please calculate the stock solution based on the stated concentration and/or density.

Reference

Pereira MDP, et al. Chemical Composition, Antiprotozoal and Cytotoxic Activities of Indole Alkaloids and Benzofuran Neolignan of *Aristolochia cordigera*. *Planta Med.* 2017 Jul;83(11):912-920.

Cano-Europa E, et al. Palmitone prevents pentylenetetrazole-caused neuronal damage in the CA3 hippocampal region of prepubertal rats. *Neurosci Lett.* 2010 Feb 12;470(2):111-4.

Carballo AI, et al. Antinociceptive activity of *Annona diversifolia* Saff. leaf extracts and palmitone as a bioactive compound. *Pharmacol Biochem Behav.* 2010 Mar;95(1):6-12.

González-Trujano ME, et al. Effect of repeated administration of *Annona diversifolia* Saff. (ilama) extracts and palmitone on rat amygdala kindling. *Epilepsy Behav.* 2009 Dec;16(4):590-5.

Inhibitor · Natural Compounds · Compound Libraries · Recombinant Proteins

This product is for Research Use Only · Not for Human or Veterinary or Therapeutic Use

Tel:781-999-4286 E_mail:info@targetmol.com Address:34 Washington Street,Wellesley Hills,MA 02481