

RI 61

## Chemical Properties

CAS No. : 95034-26-7

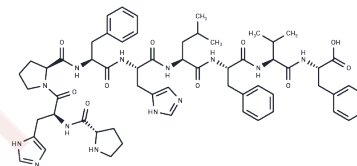
Formula: C<sub>60</sub>H<sub>77</sub>N<sub>13</sub>O<sub>10</sub>

Molecular Weight: 1140.33

Keep away from moisture

Storage: Powder: -20°C for 3 years | In solvent: -80°C for 1 year

Actual storage temperature shall be subject to the COA.



## Biological Description

Description	RI 61 (sumatriptan succinate) is utilized in the therapy of migraine, cluster headaches, new daily persistent headache, and cyclic vomiting syndrome.
Targets(IC50)	Others

## Preparing Stock Solutions

	1mg	5mg	10mg
1 mM	0.8769 mL	4.3847 mL	8.7694 mL
5 mM	0.1754 mL	0.8769 mL	1.7539 mL
10 mM	0.0877 mL	0.4385 mL	0.8769 mL
50 mM	0.0175 mL	0.0877 mL	0.1754 mL

Please select the appropriate solvent to prepare the stock solution, according to the solubility of the product in different solvents. Please use it as soon as possible.

Note: The dilution table applies only to solid products. For liquid products, please calculate the stock solution based on the stated concentration and/or density.

## Reference

Baraniak E, Sohn JC. Revised taxonomic status of *Eidophasia zukowskyi* Amsel, 1938 (Lepidoptera, Plutellidae) with first description of its male and female genitalia. *Zootaxa*. 2016 Sep 8;4162(1):164-72. doi: 10.11646/zootaxa.4162.1.8. PubMed PMID: 27615964.

Takaori K, Burton J, Donowitz M. The transport of an intact oligopeptide across adult mammalian jejunum. *Biochem Biophys Res Commun*. 1986 Jun 13;137(2):682-7. PubMed PMID: 3729934.

**Inhibitor · Natural Compounds · Compound Libraries · Recombinant Proteins**

This product is for Research Use Only · Not for Human or Veterinary or Therapeutic Use

Tel: 781-999-4286 E\_mail: info@targetmol.com Address: 34 Washington Street, Wellesley Hills, MA 02481