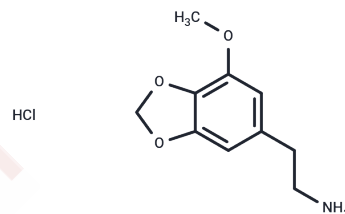


## Lophophine hydrochloride

## Chemical Properties

CAS No. :	77158-52-2
Formula:	C <sub>10</sub> H <sub>14</sub> ClNO <sub>3</sub>
Molecular Weight:	231.68
Storage:	Powder: -20°C for 3 years   In solvent: -80°C for 1 year Actual storage temperature shall be subject to the COA.



## Biological Description

Description	Lophophine (hydrochloride) is a phenethylamine compound utilized as a precursor in the synthesis of alkaloids found in <i>L. diffusa</i> and <i>L. fricii</i> .
Targets(IC50)	Endogenous Metabolite

## Preparing Stock Solutions

	1mg	5mg	10mg
1 mM	4.3163 mL	21.5815 mL	43.163 mL
5 mM	0.8633 mL	4.3163 mL	8.6326 mL
10 mM	0.4316 mL	2.1581 mL	4.3163 mL
50 mM	0.0863 mL	0.4316 mL	0.8633 mL

Please select the appropriate solvent to prepare the stock solution, according to the solubility of the product in different solvents. Please use it as soon as possible.

Note: The dilution table applies only to solid products. For liquid products, please calculate the stock solution based on the stated concentration and/or density.

**Inhibitor · Natural Compounds · Compound Libraries · Recombinant Proteins**

This product is for Research Use Only · Not for Human or Veterinary or Therapeutic Use

Tel: 781-999-4286 E\_mail: info@targetmol.com Address: 34 Washington Street, Wellesley Hills, MA 02481