

KB03-SLF

## Chemical Properties

CAS No. : 2384184-42-1

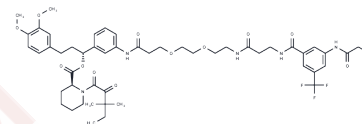
Formula: C50H63ClF3N5O12

Molecular Weight: 1018.51

Keep away from direct sunlight

Storage: Powder: -20°C for 3 years | In solvent: -80°C for 1 year

Actual storage temperature shall be subject to the COA.



## Biological Description

Description	KB03-SLF is a protease with the capability to target specific proteins and regulate intracellular protein levels by inducing protein degradation. This mechanism renders KB03-SLF potentially valuable in the suppression of related diseases.
Targets(IC50)	Others,FKBP,PROTACs

## Preparing Stock Solutions

	1mg	5mg	10mg
1 mM	0.9818 mL	4.9091 mL	9.8183 mL
5 mM	0.1964 mL	0.9818 mL	1.9637 mL
10 mM	0.0982 mL	0.4909 mL	0.9818 mL
50 mM	0.0196 mL	0.0982 mL	0.1964 mL

Please select the appropriate solvent to prepare the stock solution, according to the solubility of the product in different solvents. Please use it as soon as possible.

Note: The dilution table applies only to solid products. For liquid products, please calculate the stock solution based on the stated concentration and/or density.

**Inhibitor · Natural Compounds · Compound Libraries · Recombinant Proteins**

This product is for Research Use Only · Not for Human or Veterinary or Therapeutic Use

Tel:781-999-4286 E\_mail:info@targetmol.com Address:34 Washington Street,Wellesley Hills,MA 02481