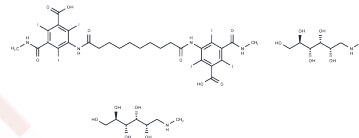


Iosefamate meglumine

Chemical Properties

CAS No. :	80234-74-8
Formula:	C42H62I6N6O18
Molecular Weight:	1700.4
Storage:	Keep away from direct sunlight Powder: -20°C for 3 years In solvent: -80°C for 1 year <small>Actual storage temperature shall be subject to the COA.</small>



Biological Description

Description	Iosefamate meglumine serves as a contrast agent for liver CT scans.
Targets(IC50)	Others

Preparing Stock Solutions

	1mg	5mg	10mg
1 mM	0.5881 mL	2.9405 mL	5.881 mL
5 mM	0.1176 mL	0.5881 mL	1.1762 mL
10 mM	0.0588 mL	0.294 mL	0.5881 mL
50 mM	0.0118 mL	0.0588 mL	0.1176 mL

Please select the appropriate solvent to prepare the stock solution, according to the solubility of the product in different solvents. Please use it as soon as possible.

Note: The dilution table applies only to solid products. For liquid products, please calculate the stock solution based on the stated concentration and/or density.

Inhibitor · Natural Compounds · Compound Libraries · Recombinant Proteins

This product is for Research Use Only · Not for Human or Veterinary or Therapeutic Use

Tel: 781-999-4286 E_mail: info@targetmol.com Address: 34 Washington Street, Wellesley Hills, MA 02481