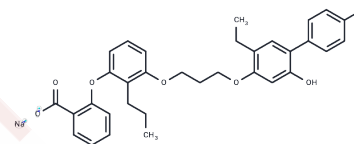


## Etalocib sodium

## Chemical Properties

CAS No. : 152608-41-8  
 Formula: C<sub>33</sub>H<sub>32</sub>FN<sub>2</sub>O<sub>6</sub>  
 Molecular Weight: 566.59  
 Storage: Powder: -20°C for 3 years | In solvent: -80°C for 1 year  
 Actual storage temperature shall be subject to the COA.



## Biological Description

Description	Etalocib (LY293111) sodium is an orally active leukotriene B <sub>4</sub> (LTB <sub>4</sub> ) receptor antagonist with a K <sub>i</sub> value of 25 nM for inhibiting [ <sup>3</sup> H]LTB <sub>4</sub> binding. It exhibits an IC <sub>50</sub> of 20 nM against LTB <sub>4</sub> -induced calcium mobilization. Additionally, Etalocib sodium can induce apoptosis.
Targets(IC <sub>50</sub> )	Apoptosis,Leukotriene Receptor
In vitro	Etalocib sodium exhibits concentration-dependent inhibition of LTB <sub>4</sub> -induced upregulation of CD11b. It acts as an extremely potent and selective antagonist of human neutrophil functions in vitro. Additionally, at concentrations of 250 and 500 nM over 24-72 hours, Etalocib sodium induces apoptosis and inhibits proliferation in human pancreatic cancer cells.
In vivo	Etalocib demonstrates dose-dependent attenuation of acute leukotriene B <sub>4</sub> -induced airway obstruction, with an (ED 50 =14 µg/kg) when given intravenously and an (ED 50 =0.4 mg/kg) when administered orally. At a dosage of 10 mg/kg, it reduces lung inflammation induced by A23187 within one hour. Furthermore, daily oral administration of Etalocib at 250 mg/kg effectively suppresses the growth of human pancreatic cancer xenografts in athymic mice.

### Preparing Stock Solutions

---

	<b>1mg</b>	<b>5mg</b>	<b>10mg</b>
1 mM	1.7649 mL	8.8247 mL	17.6494 mL
5 mM	0.353 mL	1.7649 mL	3.5299 mL
10 mM	0.1765 mL	0.8825 mL	1.7649 mL
50 mM	0.0353 mL	0.1765 mL	0.353 mL

---

Please select the appropriate solvent to prepare the stock solution, according to the solubility of the product in different solvents. Please use it as soon as possible.

Note: The dilution table applies only to solid products. For liquid products, please calculate the stock solution based on the stated concentration and/or density.

**Inhibitor · Natural Compounds · Compound Libraries · Recombinant Proteins**

This product is for Research Use Only · Not for Human or Veterinary or Therapeutic Use

Tel:781-999-4286 E\_mail:info@targetmol.com Address:34 Washington Street,Wellesley Hills,MA 02481