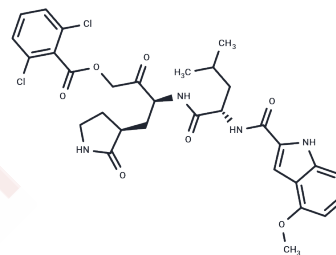


## SARS-CoV-2 Mpro-IN-31

### Chemical Properties

CAS No. : 870153-73-4  
 Formula: C<sub>31</sub>H<sub>34</sub>Cl<sub>2</sub>N<sub>4</sub>O<sub>7</sub>  
 Molecular Weight: 645.53  
 Storage: Powder: -20°C for 3 years | In solvent: -80°C for 1 year  
*Actual storage temperature shall be subject to the COA.*



### Biological Description

|                            |  |
|----------------------------|--|
| Description                | SARS-CoV-2 Mpro-IN-31 (Compound 18) is an inhibitor of SARS-CoV-2 MPro with an IC <sub>50</sub> of 11 nM. Additionally, this compound effectively inhibits the enzymatic activity of the cysteine proteases cathepsin B and cathepsin L, with IC <sub>50</sub> values of 24 nM and 1.8 nM, respectively. |
| Targets(IC <sub>50</sub> ) | SARS-CoV   |

### Preparing Stock Solutions

|       | 1mg       | 5mg       | 10mg       |
|-------|-----------|-----------|------------|
| 1 mM  | 1.5491 mL | 7.7456 mL | 15.4911 mL |
| 5 mM  | 0.3098 mL | 1.5491 mL | 3.0982 mL  |
| 10 mM | 0.1549 mL | 0.7746 mL | 1.5491 mL  |
| 50 mM | 0.031 mL  | 0.1549 mL | 0.3098 mL  |

Please select the appropriate solvent to prepare the stock solution, according to the solubility of the product in different solvents. Please use it as soon as possible.

Note: The dilution table applies only to solid products. For liquid products, please calculate the stock solution based on the stated concentration and/or density.

**Inhibitor · Natural Compounds · Compound Libraries · Recombinant Proteins**

This product is for Research Use Only · Not for Human or Veterinary or Therapeutic Use

Tel:781-999-4286 E\_mail:info@targetmol.com Address:34 Washington Street,Wellesley Hills,MA 02481