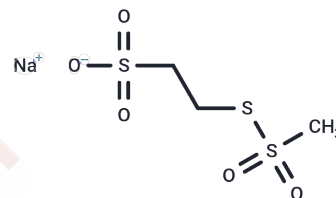


## MTSES sodium

## Chemical Properties

CAS No. :	184644-83-5
Formula:	C3H7NaO5S3
Molecular Weight:	242.27
Storage:	Powder: -20°C for 3 years   In solvent: -80°C for 1 year Actual storage temperature shall be subject to the COA.



## Biological Description

Description	MTSES sodium (Sodium (2-Sulfonatoethyl)methanethiosulfonate) is a negatively charged, membrane-impermeable methanethiosulfonate (MTS). This MTS compound can react with thiol groups to form mixed disulfides, frequently utilized in studying cysteine residues on proteins.
Targets(IC50)	Others

## Preparing Stock Solutions

	1mg	5mg	10mg
1 mM	4.1276 mL	20.6381 mL	41.2763 mL
5 mM	0.8255 mL	4.1276 mL	8.2553 mL
10 mM	0.4128 mL	2.0638 mL	4.1276 mL
50 mM	0.0826 mL	0.4128 mL	0.8255 mL

Please select the appropriate solvent to prepare the stock solution, according to the solubility of the product in different solvents. Please use it as soon as possible.

Note: The dilution table applies only to solid products. For liquid products, please calculate the stock solution based on the stated concentration and/or density.

**Inhibitor · Natural Compounds · Compound Libraries · Recombinant Proteins**

This product is for Research Use Only · Not for Human or Veterinary or Therapeutic Use

Tel:781-999-4286 E\_mail:info@targetmol.com Address:34 Washington Street,Wellesley Hills,MA 02481