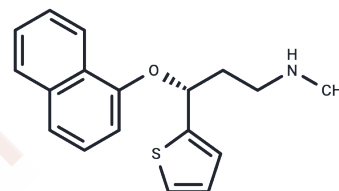


(R)-Duloxetine

Chemical Properties

CAS No. :	116539-60-7
Formula:	C ₁₈ H ₁₉ NOS
Molecular Weight:	297.42
Storage:	Powder: -20°C for 3 years In solvent: -80°C for 1 year Actual storage temperature shall be subject to the COA.



Biological Description

Description	(R)-Duloxetine, an isomer of Duloxetine, induces tonic and use-dependent blockade of neuronal Na ⁺ channels. This compound is utilized in pain research.
Targets(IC50)	Sodium Channel

Preparing Stock Solutions

	1mg	5mg	10mg
1 mM	3.3622 mL	16.8112 mL	33.6225 mL
5 mM	0.6724 mL	3.3622 mL	6.7245 mL
10 mM	0.3362 mL	1.6811 mL	3.3622 mL
50 mM	0.0672 mL	0.3362 mL	0.6724 mL

Please select the appropriate solvent to prepare the stock solution, according to the solubility of the product in different solvents. Please use it as soon as possible.

Note: The dilution table applies only to solid products. For liquid products, please calculate the stock solution based on the stated concentration and/or density.

Inhibitor · Natural Compounds · Compound Libraries · Recombinant Proteins

This product is for Research Use Only · Not for Human or Veterinary or Therapeutic Use

Tel: 781-999-4286 E_mail: info@targetmol.com Address: 34 Washington Street, Wellesley Hills, MA 02481