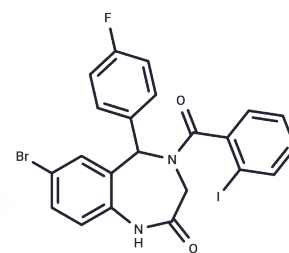


SW063058

Chemical Properties

CAS No. : 533876-30-1
 Formula: C₂₂H₁₅BrFIN₂O₂
 Molecular Weight: 565.17
 Storage: Powder: -20°C for 3 years | In solvent: -80°C for 1 year
 Actual storage temperature shall be subject to the COA.



Biological Description

Description	SW063058 is an autophagy inducer that specifically disrupts the interaction between Beclin 1 and Bcl-2 without affecting the interactions of Bcl-2 with pro-apoptotic members (such as Bax and BIM). By inhibiting the negative regulation of Beclin 1 (key to autophagy initiation) by Bcl-2, SW063058 enhances autophagic activity without inducing cytotoxicity, apoptosis, or other forms of cell death in vitro.
Targets(IC50)	Others, Autophagy

Preparing Stock Solutions

	1mg	5mg	10mg
1 mM	1.7694 mL	8.8469 mL	17.6938 mL
5 mM	0.3539 mL	1.7694 mL	3.5388 mL
10 mM	0.1769 mL	0.8847 mL	1.7694 mL
50 mM	0.0354 mL	0.1769 mL	0.3539 mL

Please select the appropriate solvent to prepare the stock solution, according to the solubility of the product in different solvents. Please use it as soon as possible.

Note: The dilution table applies only to solid products. For liquid products, please calculate the stock solution based on the stated concentration and/or density.

Inhibitor · Natural Compounds · Compound Libraries · Recombinant Proteins

This product is for Research Use Only · Not for Human or Veterinary or Therapeutic Use

Tel: 781-999-4286 E_mail: info@targetmol.com Address: 34 Washington Street, Wellesley Hills, MA 02481