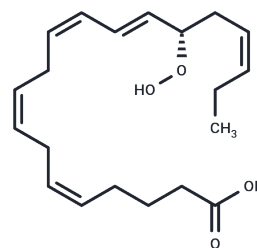


15(S)-HpEPE

Chemical Properties

CAS No. :	125992-60-1
Formula:	C20H30O4
Molecular Weight:	334.456
Storage:	Powder: -20°C for 3 years In solvent: -80°C for 1 year Actual storage temperature shall be subject to the COA.



Biological Description

Description	15(S)-HpEPE is a monohydroperoxy polyunsaturated fatty acid produced by the action of 15-lipoxygenase on eicosapentaenoic acid. Although the biological activities of 15(S)-HpEPE have not been well characterized, it is expected to behave similarly to 15(S)-HpETE.
Targets(IC50)	Others, Prostaglandin Receptor

Solubility Information

Solubility	DMSO: Miscible 0.1 M Na ₂ CO ₃ : 2 mg/mL (5.98 mM), Sonication is recommended. PBS (pH 7.2): 0.8 mg/mL (2.39 mM), Sonication is recommended. DMF: Miscible Ethanol: Miscible (< 1 mg/ml refers to the product slightly soluble or insoluble)
------------	---

Preparing Stock Solutions

	1mg	5mg	10mg
1 mM	2.9899 mL	14.9495 mL	29.8989 mL
5 mM	0.598 mL	2.9899 mL	5.9798 mL
10 mM	0.299 mL	1.4949 mL	2.9899 mL
50 mM	0.0598 mL	0.299 mL	0.598 mL

Please select the appropriate solvent to prepare the stock solution, according to the solubility of the product in different solvents. Please use it as soon as possible.

Note: The dilution table applies only to solid products. For liquid products, please calculate the stock solution based on the stated concentration and/or density.

Inhibitor · Natural Compounds · Compound Libraries · Recombinant Proteins

This product is for Research Use Only · Not for Human or Veterinary or Therapeutic Use

Tel:781-999-4286 E_mail:info@targetmol.com Address:34 Washington Street,Wellesley Hills,MA 02481