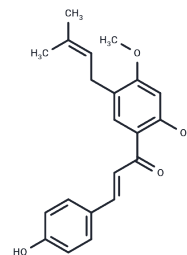


4'-O-Methylbavachalcone

Chemical Properties

CAS No. :	20784-60-5
Formula:	C ₂₁ H ₂₂ O ₄
Molecular Weight:	338.4
Storage:	Keep away from direct sunlight Powder: -20°C for 3 years In solvent: -80°C for 1 year <small>Actual storage temperature shall be subject to the COA.</small>



Biological Description

Description	4'-O-Methylbavachalcone (O-Methylbrousochalcone B) is isolated from Psoralea corylifolia, inhibits severe acute respiratory syndrome coronavirus (SARS-CoV) papain-like protease (PLpro) activity (IC ₅₀ : 10.1 μM).
Targets(IC ₅₀)	SARS-CoV

Solubility Information

Solubility	DMSO: 120 mg/mL (354.61 mM), Sonication is recommended. (< 1 mg/ml refers to the product slightly soluble or insoluble)
In vivo Formulation	5% DMSO+40% PEG300+5% Tween 80+50% Saline/PBS: 6 mg/mL (17.73 mM) <i>Please add the solvents sequentially, clarifying the solution as much as possible before adding the next one. Dissolve by heating and/or sonication if necessary. Working solution is recommended to be prepared and used immediately. The formulation provided above is for reference purposes only. In vivo formulations may vary and should be modified based on specific experimental conditions.</i>

Preparing Stock Solutions

	1mg	5mg	10mg
1 mM	2.9551 mL	14.7754 mL	29.5508 mL
5 mM	0.591 mL	2.9551 mL	5.9102 mL
10 mM	0.2955 mL	1.4775 mL	2.9551 mL
50 mM	0.0591 mL	0.2955 mL	0.591 mL

Please select the appropriate solvent to prepare the stock solution, according to the solubility of the product in different solvents. Please use it as soon as possible.

Note: The dilution table applies only to solid products. For liquid products, please calculate the stock solution based on the stated concentration and/or density.

Reference

Kim DW, et al. Phenolic phytochemical displaying SARS-CoV papain-like protease inhibition from the seeds of *Psoralea corylifolia*. *J Enzyme Inhib Med Chem*. 2014 Feb;29(1):59-63.

Inhibitor · Natural Compounds · Compound Libraries · Recombinant Proteins

This product is for Research Use Only · Not for Human or Veterinary or Therapeutic Use

Tel:781-999-4286 E_mail:info@targetmol.com Address:34 Washington Street,Wellesley Hills,MA 02481