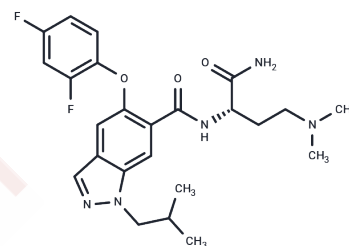


Emprumapimod

Chemical Properties

CAS No. :	765914-60-1
Formula:	C ₂₄ H ₂₉ F ₂ N ₅ O ₃
Molecular Weight:	473.52
Storage:	Powder: -20°C for 3 years In solvent: -80°C for 1 year Actual storage temperature shall be subject to the COA.



Biological Description

Description	Emprumapimod (PF-07265803) is an orally active and specific inhibitor of mitogen-activated protein kinase p38 α MAPK, inhibits LPS-induced production of IL-6, and can be used to study dilated cardiomyopathy induced by the LMNA gene.
Targets(IC50)	p38 MAPK
In vivo	In LmnaH222P/H222P mice, Emprumapimod (30 mg/kg; administered orally by gavage; starting at 16 weeks of age and continuing until 20 weeks of age) significantly increased left ventricular end-diastolic diameter (LVEDD) and left ventricular end-systolic diameter (LVESD), while reducing FS, a parameter directly proportional to the left ventricular ejection fraction[1].

Solubility Information

Solubility	DMSO: 80 mg/mL (168.95 mM), Sonication is recommended. (< 1 mg/ml refers to the product slightly soluble or insoluble)
In vivo Formulation	10% DMSO+40% PEG300+5% Tween 80+45% Saline: 3.3 mg/mL (6.97 mM), Sonication is recommended. <i>Please add the solvents sequentially, clarifying the solution as much as possible before adding the next one. Dissolve by heating and/or sonication if necessary. Working solution is recommended to be prepared and used immediately. The formulation provided above is for reference purposes only. In vivo formulations may vary and should be modified based on specific experimental conditions.</i>

Preparing Stock Solutions

	1mg	5mg	10mg
1 mM	2.1118 mL	10.5592 mL	21.1184 mL
5 mM	0.4224 mL	2.1118 mL	4.2237 mL
10 mM	0.2112 mL	1.0559 mL	2.1118 mL
50 mM	0.0422 mL	0.2112 mL	0.4224 mL

Please select the appropriate solvent to prepare the stock solution, according to the solubility of the product in different solvents. Please use it as soon as possible.

Note: The dilution table applies only to solid products. For liquid products, please calculate the stock solution based on the stated concentration and/or density.

Reference

Dale Wright, et al. ARRY-797, a Potent and Selective Inhibitor of p38 Map Kinase, Inhibits LPS-Induced IL-6 and In Vivo Growth of RPMI-8226 Human Multiple Myeloma Cells.

Antoine Muchir, et al. Abnormal p38 α mitogen-activated protein kinase signaling in dilated cardiomyopathy caused by lamin A/C gene mutation. Hum Mol Genet. 2012 Oct 1;21(19):4325-33.

Inhibitor · Natural Compounds · Compound Libraries · Recombinant Proteins

This product is for Research Use Only · Not for Human or Veterinary or Therapeutic Use

Tel:781-999-4286 E_mail:info@targetmol.com Address:34 Washington Street,Wellesley Hills,MA 02481