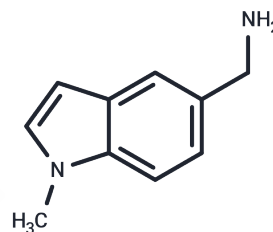


(1-METHYL-1H-INDOL-5-YL)METHYLAMINE

Chemical Properties

CAS No. :	884507-17-9
Formula:	C10H12N2
Molecular Weight:	160.21
Storage:	Powder: -20°C for 3 years In solvent: -80°C for 1 year Actual storage temperature shall be subject to the COA.



Biological Description

Description	(1-METHYL-1H-INDOL-5-YL)METHYLAMINE, with CAS No. 884507-17-9, is a fragment molecule that serves as an important scaffold for molecular linking, expansion, and modification. (1-METHYL-1H-INDOL-5-YL)METHYLAMINE provides a structural basis and research tool for the design and screening of novel drug candidates, and is commonly used in drug discovery, drug synthesis, and related research.
-------------	-------------------------------------------------------------------------------------------------------------------------------------------------------------------------------------------------------------------------------------------------------------------------------------------------------------------------------------------------------------------------------------------------------

Solubility Information

Solubility	DMSO: 32.04 mg/mL (199.99 mM), Sonication is recommended. (< 1 mg/ml refers to the product slightly soluble or insoluble)
------------	------------------------------------------------------------------------------------------------------------------------------

Preparing Stock Solutions

	1mg	5mg	10mg
1 mM	6.2418 mL	31.209 mL	62.4181 mL
5 mM	1.2484 mL	6.2418 mL	12.4836 mL
10 mM	0.6242 mL	3.1209 mL	6.2418 mL
50 mM	0.1248 mL	0.6242 mL	1.2484 mL

Please select the appropriate solvent to prepare the stock solution, according to the solubility of the product in different solvents. Please use it as soon as possible.

Note: The dilution table applies only to solid products. For liquid products, please calculate the stock solution based on the stated concentration and/or density.

Inhibitor · Natural Compounds · Compound Libraries · Recombinant Proteins

This product is for Research Use Only · Not for Human or Veterinary or Therapeutic Use

Tel: 781-999-4286 E_mail: info@targetmol.com Address: 34 Washington Street, Wellesley Hills, MA 02481