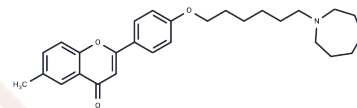


## AChE-IN-14

## Chemical Properties

CAS No. :	2390042-05-2
Formula:	C <sub>28</sub> H <sub>35</sub> N <sub>3</sub> O <sub>3</sub>
Molecular Weight:	433.58
Storage:	Powder: -20°C for 3 years   In solvent: -80°C for 1 year Actual storage temperature shall be subject to the COA.



## Biological Description

Description	AChE-IN-14 is a potent cholinesterase inhibitor, acting on electric eel acetylcholinesterase (eeAChE) (IC <sub>50</sub> : 0.46 μM), human recombinant acetylcholinesterase (hAChE) (IC <sub>50</sub> : 0.48 μM) and equine serum butyrylcholinesterase (eqBuChE) (IC <sub>50</sub> : 0.44 μM). AChE-IN-14 has a high affinity for the human H3 receptor (H3R) (K <sub>i</sub> : 159.8 nM) and can be used to study Alzheimer's disease.
Targets(IC <sub>50</sub> )	Others, Histamine Receptor, Cholinesterase (ChE)

## Preparing Stock Solutions

	1mg	5mg	10mg
1 mM	2.3064 mL	11.5319 mL	23.0638 mL
5 mM	0.4613 mL	2.3064 mL	4.6128 mL
10 mM	0.2306 mL	1.1532 mL	2.3064 mL
50 mM	0.0461 mL	0.2306 mL	0.4613 mL

Please select the appropriate solvent to prepare the stock solution, according to the solubility of the product in different solvents. Please use it as soon as possible.

Note: The dilution table applies only to solid products. For liquid products, please calculate the stock solution based on the stated concentration and/or density.

Inhibitor · Natural Compounds · Compound Libraries · Recombinant Proteins

This product is for Research Use Only · Not for Human or Veterinary or Therapeutic Use

Tel: 781-999-4286 E\_mail: info@targetmol.com Address: 34 Washington Street, Wellesley Hills, MA 02481