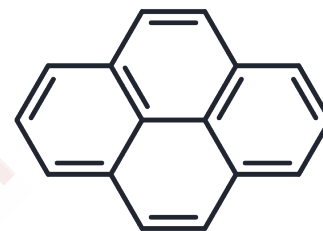


Pyrene

Chemical Properties

CAS No. :	129-00-0
Formula:	C16H10
Molecular Weight:	202.25
Storage:	Keep away from direct sunlight Store at -20°C <small>Actual storage temperature shall be subject to the COA.</small>



Biological Description

Description	Pyrene is a carcinogenic polycyclic aromatic hydrocarbon (PAH) and a sensitive blue fluorescent group with an excitation wavelength of 338 nm and an emission wavelength of 375 nm. It can be used to detect protein-lipid interactions and conformational changes and also serves as an electron donor material.
Targets(IC50)	Others

Solubility Information

Solubility	DMSO: 20 mg/mL (98.89 mM),Sonication is recommended. (< 1 mg/ml refers to the product slightly soluble or insoluble)
------------	---

Preparing Stock Solutions

	1mg	5mg	10mg
1 mM	4.9444 mL	24.7219 mL	49.4438 mL
5 mM	0.9889 mL	4.9444 mL	9.8888 mL
10 mM	0.4944 mL	2.4722 mL	4.9444 mL
50 mM	0.0989 mL	0.4944 mL	0.9889 mL

Please select the appropriate solvent to prepare the stock solution, according to the solubility of the product in different solvents. Please use it as soon as possible.

Note: The dilution table applies only to solid products. For liquid products, please calculate the stock solution based on the stated concentration and/or density.

Reference

Bains G, et al. Pyrene: a probe to study protein conformation and conformational changes. *Molecules*. 2011 Sep 14;16(9):7909-35.

Inhibitor · Natural Compounds · Compound Libraries · Recombinant Proteins

This product is for Research Use Only · Not for Human or Veterinary or Therapeutic Use

Tel:781-999-4286 E_mail:info@targetmol.com Address:34 Washington Street,Wellesley Hills,MA 02481