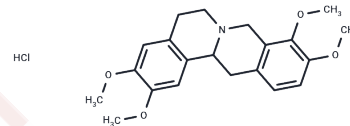


Tetrahydropalmatine hydrochloride

Chemical Properties

CAS No. :	6024-85-7
Formula:	C ₂₁ H ₂₆ ClNO ₄
Molecular Weight:	391.888
Storage:	Powder: -20°C for 3 years In solvent: -80°C for 1 year Actual storage temperature shall be subject to the COA.



Biological Description

Description	Tetrahydropalmatine hydrochloride (Gindarine hydrochloride) is an isoquinoline alkaloid found in several different plant species, mainly in the Corydalis genus (Yan Hu Suo). It is a potent muscle relaxant.
Targets(IC50)	Dopamine Receptor

Solubility Information

Solubility	H ₂ O: < 1 mg/mL (insoluble or slightly soluble) DMSO: 30.03 mg/mL (76.63 mM),Sonication is recommended. (< 1 mg/ml refers to the product slightly soluble or insoluble)
In vivo Formulation	10% DMSO+40% PEG300+5% Tween 80+45% Saline: 2 mg/mL (5.1 mM),Sonication is recommended. <i>Please add the solvents sequentially, clarifying the solution as much as possible before adding the next one. Dissolve by heating and/or sonication if necessary. Working solution is recommended to be prepared and used immediately. The formulation provided above is for reference purposes only. In vivo formulations may vary and should be modified based on specific experimental conditions.</i>

Preparing Stock Solutions

	1mg	5mg	10mg
1 mM	2.5517 mL	12.7587 mL	25.5174 mL
5 mM	0.5103 mL	2.5517 mL	5.1035 mL
10 mM	0.2552 mL	1.2759 mL	2.5517 mL
50 mM	0.051 mL	0.2552 mL	0.5103 mL

Please select the appropriate solvent to prepare the stock solution, according to the solubility of the product in different solvents. Please use it as soon as possible.

Note: The dilution table applies only to solid products. For liquid products, please calculate the stock solution based on the stated concentration and/or density.

Reference

Lee SJ, et al. Biochem Biophys Res Commun. 2014 Dec 12;455(3-4):147-52.

Inhibitor · Natural Compounds · Compound Libraries · Recombinant Proteins

This product is for Research Use Only · Not for Human or Veterinary or Therapeutic Use

Tel: 781-999-4286 E_mail: info@targetmol.com Address: 34 Washington Street, Wellesley Hills, MA 02481