

LY900009

## Chemical Properties

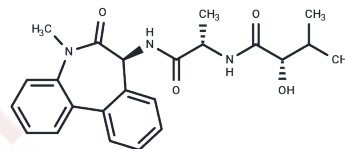
CAS No. : 209984-68-9

Formula: C<sub>23</sub>H<sub>27</sub>N<sub>3</sub>O<sub>4</sub>

Molecular Weight: 409.48

Storage: Powder: -20°C for 3 years | In solvent: -80°C for 1 year

Actual storage temperature shall be subject to the COA.



## Biological Description

Description	LY900009 is a small molecule inhibitor of Notch signalling via selective inhibition of the $\gamma$ -secretase protein.
Targets(IC50)	Gamma-secretase

## Solubility Information

Solubility	DMSO: 11 mg/mL (26.86 mM), Sonication is recommended. ( $< 1$ mg/ml refers to the product slightly soluble or insoluble)
In vivo Formulation	10% DMSO+40% PEG300+5% Tween 80+45% Saline: 2 mg/mL (4.88 mM), Sonication is recommended. <i>Please add the solvents sequentially, clarifying the solution as much as possible before adding the next one. Dissolve by heating and/or sonication if necessary. Working solution is recommended to be prepared and used immediately. The formulation provided above is for reference purposes only. In vivo formulations may vary and should be modified based on specific experimental conditions.</i>

## Preparing Stock Solutions

	1mg	5mg	10mg
1 mM	2.4421 mL	12.2106 mL	24.4212 mL
5 mM	0.4884 mL	2.4421 mL	4.8842 mL
10 mM	0.2442 mL	1.2211 mL	2.4421 mL
50 mM	0.0488 mL	0.2442 mL	0.4884 mL

Please select the appropriate solvent to prepare the stock solution, according to the solubility of the product in different solvents. Please use it as soon as possible.

Note: The dilution table applies only to solid products. For liquid products, please calculate the stock solution based on the stated concentration and/or density.

Reference

A first-in-human phase I study of the oral Notch inhibitor, LY900009, in patients with advanced cancer[J]. European Journal of Cancer, 2016, 56.

**Inhibitor · Natural Compounds · Compound Libraries · Recombinant Proteins**

This product is for Research Use Only · Not for Human or Veterinary or Therapeutic Use

Tel:781-999-4286 E\_mail:info@targetmol.com Address:34 Washington Street,Wellesley Hills,MA 02481