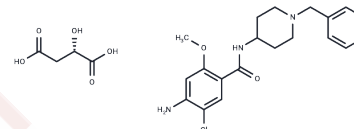


Clebopride malate

Chemical Properties

CAS No. : 57645-91-7
 Formula: C₂₄H₃₀ClN₃O₇
 Molecular Weight: 507.96
 Storage: Powder: -20°C for 3 years | In solvent: -80°C for 1 year
 Actual storage temperature shall be subject to the COA.



Biological Description

Description	Clebopride malate is a dopamine antagonist used to treat functional gastrointestinal disorders, such as nausea or vomiting.
Targets(IC50)	Adrenergic Receptor,Dopamine Receptor
In vivo	Clebopride, a new benzamide derivative, has, in common with the other members of this group,and with antiemetic drug, antidopaminergic activity.?In animals, its therapeutic ratio is superior to that of metoclopramide at doses free of side effects associated with hyperprolactinemia and extrapyramidal symptoms[1].

Solubility Information

Solubility	DMSO: 34 mg/mL (66.93 mM),Sonication is recommended. (< 1 mg/ml refers to the product slightly soluble or insoluble)
In vivo Formulation	10% DMSO+40% PEG300+5% Tween 80+45% Saline: 2.5 mg/mL (4.92 mM),Sonication is recommended. <i>Please add the solvents sequentially, clarifying the solution as much as possible before adding the next one. Dissolve by heating and/or sonication if necessary. Working solution is recommended to be prepared and used immediately. The formulation provided above is for reference purposes only. In vivo formulations may vary and should be modified based on specific experimental conditions.</i>

Preparing Stock Solutions

	1mg	5mg	10mg
1 mM	1.9687 mL	9.8433 mL	19.6866 mL
5 mM	0.3937 mL	1.9687 mL	3.9373 mL
10 mM	0.1969 mL	0.9843 mL	1.9687 mL
50 mM	0.0394 mL	0.1969 mL	0.3937 mL

Please select the appropriate solvent to prepare the stock solution, according to the solubility of the product in different solvents. Please use it as soon as possible.

Note: The dilution table applies only to solid products. For liquid products, please calculate the stock solution based on the stated concentration and/or density.

Reference

Bleiberg H , Piccart M , Lips S , et al. A phase I trial of a new antiemetic drug--clebopride malate--in cisplatin-treated patients[J]. Annals of Oncology Official Journal of the European Society for Medical Oncology, 1992, 3(2): 141.

Kawasaki H , Yamamoto M , Okayasu H , et al. [A case of respiratory dyskinesia due to clebopride malate][J]. Rinsho shinkeigaku = Clinical neurology, 1991, 31(8):878-881.

Inhibitor · Natural Compounds · Compound Libraries · Recombinant Proteins

This product is for Research Use Only · Not for Human or Veterinary or Therapeutic Use

Tel:781-999-4286 E_mail:info@targetmol.com Address:34 Washington Street,Wellesley Hills,MA 02481