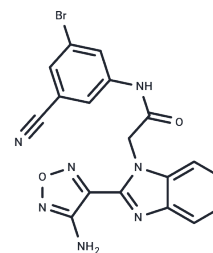


## BChE-IN-8

## Chemical Properties

CAS No. :	2653349-78-9
Formula:	C <sub>18</sub> H <sub>12</sub> BrN <sub>7</sub> O <sub>2</sub>
Molecular Weight:	438.24
Storage:	Powder: -20°C for 3 years   In solvent: -80°C for 1 year Actual storage temperature shall be subject to the COA.



## Biological Description

Description	BChE-IN-8 (compound 20) is an orally active butyrylcholinesterase (BChE) inhibitor that crosses the blood-brain barrier, targeting eqBChE (IC <sub>50</sub> : 0.15 nM) and hBChE (IC <sub>50</sub> : 45.2 nM). It is used in Alzheimer's disease (AD) research for its neuroprotective and cognitive improvement effects, affecting the cholinergic system, Aβ aggregation, and neuropeptide levels.
Targets(IC <sub>50</sub> )	Beta Amyloid,Others

## Preparing Stock Solutions

	1mg	5mg	10mg
1 mM	2.2819 mL	11.4093 mL	22.8185 mL
5 mM	0.4564 mL	2.2819 mL	4.5637 mL
10 mM	0.2282 mL	1.1409 mL	2.2819 mL
50 mM	0.0456 mL	0.2282 mL	0.4564 mL

Please select the appropriate solvent to prepare the stock solution, according to the solubility of the product in different solvents. Please use it as soon as possible.

Note: The dilution table applies only to solid products. For liquid products, please calculate the stock solution based on the stated concentration and/or density.

Inhibitor · Natural Compounds · Compound Libraries · Recombinant Proteins

This product is for Research Use Only · Not for Human or Veterinary or Therapeutic Use

Tel:781-999-4286 E\_mail:info@targetmol.com Address:34 Washington Street,Wellesley Hills,MA 02481