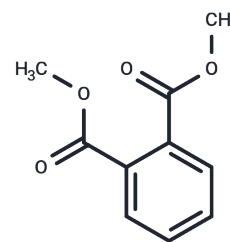


## Dimethyl phthalate

## Chemical Properties

CAS No. :	131-11-3
Formula:	C10H10O4
Molecular Weight:	194.18
Storage:	Keep away from direct sunlight Powder: -20°C for 3 years   In solvent: -80°C for 1 year <small>Actual storage temperature shall be subject to the COA.</small>



## Biological Description

Description	Dimethyl phthalate (Fermine) has many uses, including in solid rocket propellants, plastics, and insect repellants. Acute (short-term) exposure to dimethyl phthalate, via inhalation in humans and animals, results in irritation of the eyes, nose, and throat. No information is available on the chronic (long-term), reproductive, developmental, or carcinogenic effects of dimethyl phthalate in humans. Animal studies have reported slight effects on growth and on the kidney from chronic oral exposure to the chemical. EPA has classified dimethyl phthalate as a Group D, not classifiable as to human carcinogenicity.
Targets(IC50)	Apoptosis,Others,ROS

## Solubility Information

Solubility	DMSO: 37.5 mg/mL (193.12 mM),Sonication is recommended. (< 1 mg/ml refers to the product slightly soluble or insoluble)
In vivo Formulation	10% DMSO+40% PEG300+5% Tween 80+45% Saline: 2 mg/mL (10.3 mM),Sonication is recommended. <i>Please add the solvents sequentially, clarifying the solution as much as possible before adding the next one. Dissolve by heating and/or sonication if necessary. Working solution is recommended to be prepared and used immediately. The formulation provided above is for reference purposes only. In vivo formulations may vary and should be modified based on specific experimental conditions.</i>

### Preparing Stock Solutions

---

	1mg	5mg	10mg
1 mM	5.1499 mL	25.7493 mL	51.4986 mL
5 mM	1.030 mL	5.1499 mL	10.2997 mL
10 mM	0.515 mL	2.5749 mL	5.1499 mL
50 mM	0.103 mL	0.515 mL	1.030 mL

---

Please select the appropriate solvent to prepare the stock solution, according to the solubility of the product in different solvents. Please use it as soon as possible.

Note: The dilution table applies only to solid products. For liquid products, please calculate the stock solution based on the stated concentration and/or density.

### Reference

Tang, Y., Zhang, Y., Jiang, L. et al. Biodegradation (2017) 28: 413. <https://doi.org/10.1007/s10532-017-9805-x>  
Li, J., Luo, F., Chu, D., Xuan, H., & Dai, X. (2017). Complete degradation of dimethyl phthalate by a Comamonas testosterone strain. Journal Of Basic Microbiology, 57(11), 941-949. doi: 10.1002/jobm.201700296

**Inhibitor · Natural Compounds · Compound Libraries · Recombinant Proteins**

This product is for Research Use Only · Not for Human or Veterinary or Therapeutic Use

Tel:781-999-4286 E\_mail:info@targetmol.com Address:34 Washington Street,Wellesley Hills,MA 02481