

Lauryl betaine

Chemical Properties

CAS No. : 683-10-3

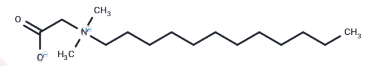
Formula: C₁₆H₃₃NO₂

Molecular Weight: 271.44

Pure form: -20°C for 3 years | In solvent: -80°C for 1

Storage: year

Actual storage temperature shall be subject to the COA.



Biological Description

Description	Lauryl betaine (n-Dodecyl-N) has antifungal activity and inhibits Malassezia spp. Lauryl betaine is used as a surfactant and emulsifier and is commonly used in the skin care industry.
Targets(IC50)	Antifungal

Preparing Stock Solutions

	1mg	5mg	10mg
1 mM	3.6841 mL	18.4203 mL	36.8406 mL
5 mM	0.7368 mL	3.6841 mL	7.3681 mL
10 mM	0.3684 mL	1.842 mL	3.6841 mL
50 mM	0.0737 mL	0.3684 mL	0.7368 mL

Please select the appropriate solvent to prepare the stock solution, according to the solubility of the product in different solvents. Please use it as soon as possible.

Note: The dilution table applies only to solid products. For liquid products, please calculate the stock solution based on the stated concentration and/or density.

Reference

Sugiyama M, et al. Predicting the results of a 24-hr human patch test for surfactants: utility of margin-setting in a reconstructed human epidermis model. J Toxicol Sci. 2019;44(6):393-403.

Inhibitor · Natural Compounds · Compound Libraries · Recombinant Proteins

This product is for Research Use Only · Not for Human or Veterinary or Therapeutic Use

Tel:781-999-4286

E_mail:info@targetmol.com

Address:34 Washington Street,Wellesley Hills,MA 02481