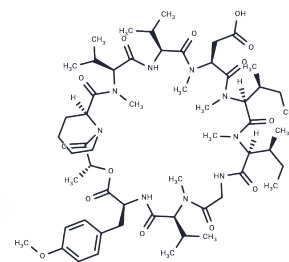


Cyclopeptolide 1

Chemical Properties

CAS No. :	129816-38-2
Formula:	C57H91N9O14
Molecular Weight:	1126.38
Storage:	Keep away from moisture Powder: -20°C for 3 years In solvent: -80°C for 1 year <small>Actual storage temperature shall be subject to the COA.</small>



Biological Description

Description	Cyclopeptolide 1 is a novel antifungal cyclopeptolide. Cyclopeptolide 1 is similar to cyclosporin A that consists of nine S-amino acids and R-lactic acid.
Targets(IC50)	Others

Preparing Stock Solutions

	1mg	5mg	10mg
1 mM	0.8878 mL	4.439 mL	8.878 mL
5 mM	0.1776 mL	0.8878 mL	1.7756 mL
10 mM	0.0888 mL	0.4439 mL	0.8878 mL
50 mM	0.0178 mL	0.0888 mL	0.1776 mL

Please select the appropriate solvent to prepare the stock solution, according to the solubility of the product in different solvents. Please use it as soon as possible.

Note: The dilution table applies only to solid products. For liquid products, please calculate the stock solution based on the stated concentration and/or density.

Reference

Emmer G, Grassberger MA, Meingassner JG, Schulz G, Schauder M. Derivatives of a novel cyclopeptolide. 1. Synthesis, antifungal activity, and structure-activity relationships. *J Med Chem.* 1994 Jun 24;37(13):1908-17. PubMed PMID: 8027972.

Yun BS, Kwon EM, Kim JC, Yu SH. Antifungal cyclopeptolide from fungal saprophytic antagonist *Ulocladium atrum*. *J Microbiol Biotechnol.* 2007 Jul;17(7):1217-20. PubMed PMID: 18051337.

Inhibitor · Natural Compounds · Compound Libraries · Recombinant Proteins

This product is for Research Use Only · Not for Human or Veterinary or Therapeutic Use

Tel: 781-999-4286 E_mail: info@targetmol.com Address: 34 Washington Street, Wellesley Hills, MA 02481