

## Ginsenoside Rh2

## Chemical Properties

CAS No. : 78214-33-2

Formula: C<sub>36</sub>H<sub>62</sub>O<sub>8</sub>

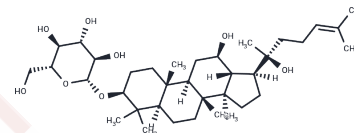
Molecular Weight: 622.87

Storage:

Keep away from direct sunlight, Keep away from moisture, Store at low temperature

Powder: -20°C for 3 years | In solvent: -80°C for 1 year

Actual storage temperature shall be subject to the COA.



## Biological Description

Description	Ginsenoside Rh2 (20(S)-Ginsenoside Rh2), an extract of red Panax ginseng, is a potent anti-inflammatory and anticancer drug.
Targets(IC50)	Apoptosis, EGFR, Caspase, Endogenous Metabolite

## Solubility Information

Solubility	DMSO: 100 mg/mL (160.55 mM), Sonication is recommended. ( $< 1$ mg/ml refers to the product slightly soluble or insoluble)
In vivo Formulation	5% DMSO+40% PEG300+5% Tween 80+50% Saline: 2.5 mg/mL (4.01 mM), Solution. <i>Please add the solvents sequentially, clarifying the solution as much as possible before adding the next one. Dissolve by heating and/or sonication if necessary. Working solution is recommended to be prepared and used immediately. The formulation provided above is for reference purposes only. In vivo formulations may vary and should be modified based on specific experimental conditions.</i>

## Preparing Stock Solutions

	1mg	5mg	10mg
1 mM	1.6055 mL	8.0274 mL	16.0547 mL
5 mM	0.3211 mL	1.6055 mL	3.2109 mL
10 mM	0.1605 mL	0.8027 mL	1.6055 mL
50 mM	0.0321 mL	0.1605 mL	0.3211 mL

Please select the appropriate solvent to prepare the stock solution, according to the solubility of the product in different solvents. Please use it as soon as possible.

Note: The dilution table applies only to solid products. For liquid products, please calculate the stock solution based on the stated concentration and/or density.

Reference

Zhang H, et al. Int J Clin Exp Pathol. 2015 May 1;8(5):4444-56.

**Inhibitor · Natural Compounds · Compound Libraries · Recombinant Proteins**

This product is for Research Use Only · Not for Human or Veterinary or Therapeutic Use

Tel:781-999-4286 E\_mail:info@targetmol.com Address:34 Washington Street,Wellesley Hills,MA 02481