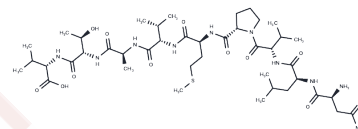


CEF20

Chemical Properties

| | |
|-------------------|---|
| CAS No. : | 153045-21-7 |
| Formula: | C42H74N10O12S |
| Molecular Weight: | 943.16 |
| Storage: | Keep away from moisture Powder: -20°C for 3 years In solvent: -80°C for 1 year <small>Actual storage temperature shall be subject to the COA.</small> |



Biological Description

| | |
|---------------|---|
| Description | CEF20, a CEF control peptide pool, is an HLA-A*0201-restricted epitope from cytomegalovirus pp65 (495-503). |
| Targets(IC50) | Virus Protease |

Preparing Stock Solutions

| | 1mg | 5mg | 10mg |
|-------|-----------|-----------|------------|
| 1 mM | 1.0603 mL | 5.3013 mL | 10.6027 mL |
| 5 mM | 0.2121 mL | 1.0603 mL | 2.1205 mL |
| 10 mM | 0.106 mL | 0.5301 mL | 1.0603 mL |
| 50 mM | 0.0212 mL | 0.106 mL | 0.2121 mL |

Please select the appropriate solvent to prepare the stock solution, according to the solubility of the product in different solvents. Please use it as soon as possible.

Note: The dilution table applies only to solid products. For liquid products, please calculate the stock solution based on the stated concentration and/or density.

Inhibitor · Natural Compounds · Compound Libraries · Recombinant Proteins

This product is for Research Use Only · Not for Human or Veterinary or Therapeutic Use

Tel: 781-999-4286 E_mail: info@targetmol.com Address: 34 Washington Street, Wellesley Hills, MA 02481