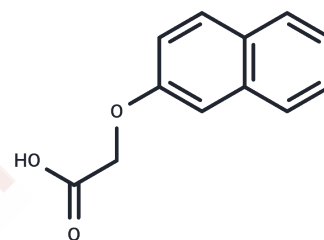


## 2-Naphthoxyacetic acid

## Chemical Properties

CAS No. :	120-23-0
Formula:	C <sub>12</sub> H <sub>10</sub> O <sub>3</sub>
Molecular Weight:	202.21
Storage:	Powder: -20°C for 3 years   In solvent: -80°C for 1 year Actual storage temperature shall be subject to the COA.



## Biological Description

Description	2-Naphthoxyacetic acid is an endogenous metabolite that is an inhibitor of firefly luciferase (Potency=40 μm).
Targets(IC50)	Endogenous Metabolite

## Solubility Information

Solubility	DMSO: 80 mg/mL (395.63 mM),Sonication is recommended. (< 1 mg/ml refers to the product slightly soluble or insoluble)
In vivo Formulation	10% DMSO+40% PEG300+5% Tween 80+45% Saline: 3.3 mg/mL (16.32 mM),Sonication is recommended. <i>Please add the solvents sequentially, clarifying the solution as much as possible before adding the next one. Dissolve by heating and/or sonication if necessary. Working solution is recommended to be prepared and used immediately. The formulation provided above is for reference purposes only. In vivo formulations may vary and should be modified based on specific experimental conditions.</i>

## Preparing Stock Solutions

	1mg	5mg	10mg
1 mM	4.9454 mL	24.7268 mL	49.4535 mL
5 mM	0.9891 mL	4.9454 mL	9.8907 mL
10 mM	0.4945 mL	2.4727 mL	4.9454 mL
50 mM	0.0989 mL	0.4945 mL	0.9891 mL

Please select the appropriate solvent to prepare the stock solution, according to the solubility of the product in different solvents. Please use it as soon as possible.

Note: The dilution table applies only to solid products. For liquid products, please calculate the stock solution based on the stated concentration and/or density.

Reference

Murillo Pulgarín JA, García Bermejo LF, Sánchez-Ferrer Robles I, Becedas Rodríguez S. Simultaneous determination of plant growth regulators 1-naphthylacetic acid and 2-naphthoxyacetic acid in fruit and vegetable samples by room temperature phosphorescence. *Phytochem Anal.* 2012 May-Jun;23(3):214-21.

**Inhibitor · Natural Compounds · Compound Libraries · Recombinant Proteins**

This product is for Research Use Only · Not for Human or Veterinary or Therapeutic Use

Tel:781-999-4286 E\_mail:info@targetmol.com Address:34 Washington Street,Wellesley Hills,MA 02481