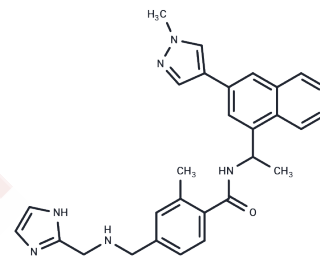


PLpro-IN-6

Chemical Properties

CAS No. :	3041046-04-9
Formula:	C ₂₉ H ₃₀ N ₆ O
Molecular Weight:	478.59
Storage:	Powder: -20°C for 3 years In solvent: -80°C for 1 year Actual storage temperature shall be subject to the COA.



Biological Description

Description	PLpro-IN-6 (compound 6) serves as an inhibitor for the papain-like protease (PLpro), demonstrating potent activity with an IC ₅₀ of 0.019 μM against the SARS-CoV-2 PLpro enzyme.
Targets(IC ₅₀)	SARS-CoV

Preparing Stock Solutions

	1mg	5mg	10mg
1 mM	2.0895 mL	10.4474 mL	20.8947 mL
5 mM	0.4179 mL	2.0895 mL	4.1789 mL
10 mM	0.2089 mL	1.0447 mL	2.0895 mL
50 mM	0.0418 mL	0.2089 mL	0.4179 mL

Please select the appropriate solvent to prepare the stock solution, according to the solubility of the product in different solvents. Please use it as soon as possible.

Note: The dilution table applies only to solid products. For liquid products, please calculate the stock solution based on the stated concentration and/or density.

Inhibitor · Natural Compounds · Compound Libraries · Recombinant Proteins

This product is for Research Use Only · Not for Human or Veterinary or Therapeutic Use

Tel: 781-999-4286 E_mail: info@targetmol.com Address: 34 Washington Street, Wellesley Hills, MA 02481