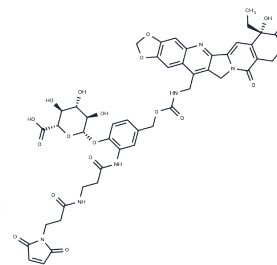


## Mal-Bal-Ph( $\beta$ -D-Glucose)-7-MAD-MDCPT

### Chemical Properties

CAS No. : 2396667-62-0  
 Formula: C<sub>46</sub>H<sub>44</sub>N<sub>6</sub>O<sub>19</sub>  
 Molecular Weight: 984.87  
 Storage: Powder: -20°C for 3 years | In solvent: -80°C for 1 year  
*Actual storage temperature shall be subject to the COA.*



### Biological Description

Description	Mal-Bal-Ph( $\beta$ -D-Glucose)-7-MAD-MDCPT serves as a drug-linker conjugate for ADC (antibody-drug conjugate) synthesis.
Targets(IC50)	Drug-Linker Conjugates for ADC

### Preparing Stock Solutions

	1mg	5mg	10mg
1 mM	1.0154 mL	5.0768 mL	10.1536 mL
5 mM	0.2031 mL	1.0154 mL	2.0307 mL
10 mM	0.1015 mL	0.5077 mL	1.0154 mL
50 mM	0.0203 mL	0.1015 mL	0.2031 mL

Please select the appropriate solvent to prepare the stock solution, according to the solubility of the product in different solvents. Please use it as soon as possible.

Note: The dilution table applies only to solid products. For liquid products, please calculate the stock solution based on the stated concentration and/or density.

**Inhibitor · Natural Compounds · Compound Libraries · Recombinant Proteins**

This product is for Research Use Only · Not for Human or Veterinary or Therapeutic Use

Tel: 781-999-4286 E\_mail: info@targetmol.com Address: 34 Washington Street, Wellesley Hills, MA 02481