

KPU-300

Chemical Properties

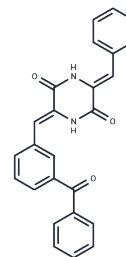
CAS No. : 1620692-60-5

Formula: C₂₄H₁₇N₃O₃

Molecular Weight: 395.41

Storage: Powder: -20°C for 3 years | In solvent: -80°C for 1 year

Actual storage temperature shall be subject to the COA.



Biological Description

Description	KPU-300 (compound 6b), functioning as a tubulin inhibitor, exhibits pronounced cytotoxic effects, boasting an IC ₅₀ value of 7.0 nM against HT-29 cells.
Targets(IC ₅₀)	Microtubule Associated

Preparing Stock Solutions

	1mg	5mg	10mg
1 mM	2.529 mL	12.6451 mL	25.2902 mL
5 mM	0.5058 mL	2.529 mL	5.058 mL
10 mM	0.2529 mL	1.2645 mL	2.529 mL
50 mM	0.0506 mL	0.2529 mL	0.5058 mL

Please select the appropriate solvent to prepare the stock solution, according to the solubility of the product in different solvents. Please use it as soon as possible.

Note: The dilution table applies only to solid products. For liquid products, please calculate the stock solution based on the stated concentration and/or density.

Inhibitor · Natural Compounds · Compound Libraries · Recombinant Proteins

This product is for Research Use Only · Not for Human or Veterinary or Therapeutic Use

Tel: 781-999-4286

E_mail: info@targetmol.com

Address: 34 Washington Street, Wellesley Hills, MA 02481