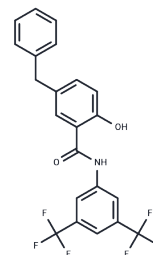


LX1

Chemical Properties

CAS No. : 2647877-84-5
 Formula: C₂₂H₁₅F₆NO₂
 Molecular Weight: 439.35
 Storage: Powder: -20°C for 3 years | In solvent: -80°C for 1 year
 Actual storage temperature shall be subject to the COA.



Biological Description

Description	LX1, an anti-prostate cancer compound, specifically targets the androgen receptor (AR), AR variants, and the steroidogenic enzyme AKR1C3. It inhibits AKR1C3's enzymatic function, decreases the conversion of androstenedione to testosterone, and reduces the expression of both AR and AR-V7, subsequently downregulating their target genes. Additionally, LX1 is effective in overcoming tumor cell resistance to Enzalutamide, and when combined with Enzalutamide, it further suppresses tumor growth.
Targets(IC50)	Androgen Receptor,Reductase

Preparing Stock Solutions

	1mg	5mg	10mg
1 mM	2.2761 mL	11.3804 mL	22.7609 mL
5 mM	0.4552 mL	2.2761 mL	4.5522 mL
10 mM	0.2276 mL	1.138 mL	2.2761 mL
50 mM	0.0455 mL	0.2276 mL	0.4552 mL

Please select the appropriate solvent to prepare the stock solution, according to the solubility of the product in different solvents. Please use it as soon as possible.

Note: The dilution table applies only to solid products. For liquid products, please calculate the stock solution based on the stated concentration and/or density.

Inhibitor · Natural Compounds · Compound Libraries · Recombinant Proteins

This product is for Research Use Only · Not for Human or Veterinary or Therapeutic Use

Tel:781-999-4286 E_mail:info@targetmol.com Address:34 Washington Street,Wellesley Hills,MA 02481