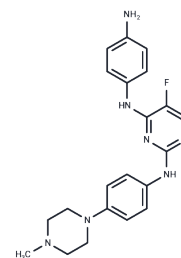


GTSE1-IN-1

Chemical Properties

| | |
|-------------------|---|
| CAS No. : | 3002034-34-3 |
| Formula: | C ₂₁ H ₂₄ FN ₇ |
| Molecular Weight: | 393.46 |
| Storage: | Powder: -20°C for 3 years In solvent: -80°C for 1 year Actual storage temperature shall be subject to the COA. |



Biological Description

| | |
|---------------|---|
| Description | GTSE1-IN-1 (compound Y18), an orally active GTSE1 inhibitor, exhibits notable anticancer properties. It effectively represses the proliferation of cancer cells by downregulating GTSE1 transcription and expression, which leads to DNA damage and promotes persistent cell cycle arrest and cellular senescence. Moreover, GTSE1-IN-1 substantially reduces the adhesion, migration, and invasion of colorectal cancer HCT116 cells and non-small cell lung cancer A549 cells in vitro. |
| Targets(IC50) | DNA/RNA Synthesis |

Preparing Stock Solutions

| | 1mg | 5mg | 10mg |
|-------|-----------|------------|------------|
| 1 mM | 2.5416 mL | 12.7078 mL | 25.4155 mL |
| 5 mM | 0.5083 mL | 2.5416 mL | 5.0831 mL |
| 10 mM | 0.2542 mL | 1.2708 mL | 2.5416 mL |
| 50 mM | 0.0508 mL | 0.2542 mL | 0.5083 mL |

Please select the appropriate solvent to prepare the stock solution, according to the solubility of the product in different solvents. Please use it as soon as possible.

Note: The dilution table applies only to solid products. For liquid products, please calculate the stock solution based on the stated concentration and/or density.

Inhibitor · Natural Compounds · Compound Libraries · Recombinant Proteins

This product is for Research Use Only · Not for Human or Veterinary or Therapeutic Use

Tel:781-999-4286 E_mail:info@targetmol.com Address:34 Washington Street,Wellesley Hills,MA 02481