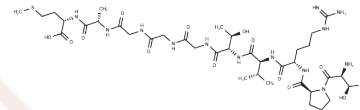


CMV pp65 (415-429)

Chemical Properties

CAS No. :	207847-44-7
Formula:	C38H67N13O13S
Molecular Weight:	946.08
Storage:	Keep away from moisture Powder: -20°C for 3 years In solvent: -80°C for 1 year <small>Actual storage temperature shall be subject to the COA.</small>



Biological Description

Description	CMVpp65 (415-429) is a CEF control peptide derived from cytomegalovirus (CMV).
Targets(IC50)	Others,Virus Protease

Preparing Stock Solutions

	1mg	5mg	10mg
1 mM	1.057 mL	5.285 mL	10.5699 mL
5 mM	0.2114 mL	1.057 mL	2.114 mL
10 mM	0.1057 mL	0.5285 mL	1.057 mL
50 mM	0.0211 mL	0.1057 mL	0.2114 mL

Please select the appropriate solvent to prepare the stock solution, according to the solubility of the product in different solvents. Please use it as soon as possible.

Note: The dilution table applies only to solid products. For liquid products, please calculate the stock solution based on the stated concentration and/or density.

Inhibitor · Natural Compounds · Compound Libraries · Recombinant Proteins

This product is for Research Use Only · Not for Human or Veterinary or Therapeutic Use

Tel:781-999-4286 E_mail:info@targetmol.com Address:34 Washington Street,Wellesley Hills,MA 02481