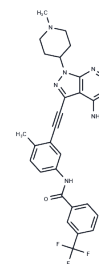


SKLB646

Chemical Properties

CAS No. : 1970149-05-3
 Formula: C₂₈H₂₆F₃N₇O
 Molecular Weight: 533.55
 Storage: Powder: -20°C for 3 years | In solvent: -80°C for 1 year
 Actual storage temperature shall be subject to the COA.



Biological Description

Description	SKLB646 is an orally active multitarget kinase inhibitor that exhibits potent suppression of several kinases. It demonstrates significant inhibitory effects on SRC and VEGFR2, with IC ₅₀ values of 0.002 μmol/L and 0.012 μmol/L, respectively. Additionally, SKLB646 shows notable inhibition of B-Raf and C-Raf, with IC ₅₀ values of 0.022 μmol/L and 0.019 μmol/L, respectively. The compound inhibits the activation of the SRC signaling pathway and blocks the MAPK signaling pathway by inhibiting Raf kinases. Furthermore, SKLB646 inhibits the proliferation, migration, and invasion of human umbilical vein endothelial cells (HUVEC), thereby suppressing tumor-induced angiogenesis. SKLB646 also displays significant anti-proliferative and anti-survival effects on triple-negative breast cancer (TNBC) cell lines.
Targets(IC ₅₀)	Raf,p38 MAPK,Src,VEGFR

Preparing Stock Solutions

	1mg	5mg	10mg
1 mM	1.8742 mL	9.3712 mL	18.7424 mL
5 mM	0.3748 mL	1.8742 mL	3.7485 mL
10 mM	0.1874 mL	0.9371 mL	1.8742 mL
50 mM	0.0375 mL	0.1874 mL	0.3748 mL

Please select the appropriate solvent to prepare the stock solution, according to the solubility of the product in different solvents. Please use it as soon as possible.

Note: The dilution table applies only to solid products. For liquid products, please calculate the stock solution based on the stated concentration and/or density.

Inhibitor · Natural Compounds · Compound Libraries · Recombinant Proteins

This product is for Research Use Only · Not for Human or Veterinary or Therapeutic Use

Tel:781-999-4286 E_mail:info@targetmol.com Address:34 Washington Street,Wellesley Hills,MA 02481