

CAD204520

## Chemical Properties

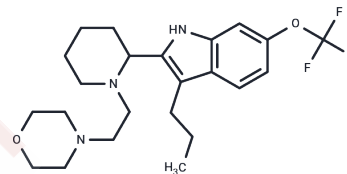
CAS No. : 2682205-20-3

Formula: C<sub>23</sub>H<sub>32</sub>F<sub>3</sub>N<sub>3</sub>O<sub>2</sub>

Molecular Weight: 439.51

Storage: Powder: -20°C for 3 years | In solvent: -80°C for 1 year

Actual storage temperature shall be subject to the COA.



## Biological Description

|                            |   |
|----------------------------|---|
| Description                | CAD204520 functions as an inhibitor of SERCA (IC <sub>50</sub> = 0.34 μM), specifically targeting mutations in the wild-type NOTCH1 protein associated with T-cell acute lymphoblastic leukemia (T-ALL) and mantle cell lymphoma (MCL). |
| Targets(IC <sub>50</sub> ) | Calcium Channel, Gamma-secretase  |

## Preparing Stock Solutions

|       | 1mg       | 5mg        | 10mg       |
|-------|-----------|------------|------------|
| 1 mM  | 2.2753 mL | 11.3763 mL | 22.7526 mL |
| 5 mM  | 0.4551 mL | 2.2753 mL  | 4.5505 mL  |
| 10 mM | 0.2275 mL | 1.1376 mL  | 2.2753 mL  |
| 50 mM | 0.0455 mL | 0.2275 mL  | 0.4551 mL  |

Please select the appropriate solvent to prepare the stock solution, according to the solubility of the product in different solvents. Please use it as soon as possible.

Note: The dilution table applies only to solid products. For liquid products, please calculate the stock solution based on the stated concentration and/or density.

Inhibitor · Natural Compounds · Compound Libraries · Recombinant Proteins

This product is for Research Use Only · Not for Human or Veterinary or Therapeutic Use

Tel: 781-999-4286 E\_mail: info@targetmol.com Address: 34 Washington Street, Wellesley Hills, MA 02481