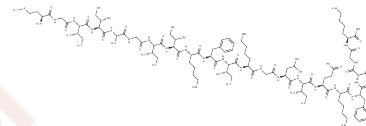


PSM α 2

Chemical Properties

CAS No. :	1092844-32-0
Formula:	C109H185N25O25S
Molecular Weight:	2277.85
Storage:	Keep away from moisture Powder: -20°C for 3 years In solvent: -80°C for 1 year <small>Actual storage temperature shall be subject to the COA.</small>



Biological Description

Description	PSM α 2, a powerful PSM (phenol-soluble modulin) peptide, induces a significant leukocyte influx in mouse neutrophils.
Targets(IC50)	Others
In vivo	PSM α 2 induces leukocyte infiltration in mouse air pouches, a process that can be inhibited by WRW4; however, the closely related homolog wwrw3 does not block this effect.

Preparing Stock Solutions

	1mg	5mg	10mg
1 mM	0.439 mL	2.1951 mL	4.3901 mL
5 mM	0.0878 mL	0.439 mL	0.878 mL
10 mM	0.0439 mL	0.2195 mL	0.439 mL
50 mM	0.0088 mL	0.0439 mL	0.0878 mL

Please select the appropriate solvent to prepare the stock solution, according to the solubility of the product in different solvents. Please use it as soon as possible.

Note: The dilution table applies only to solid products. For liquid products, please calculate the stock solution based on the stated concentration and/or density.

Inhibitor · Natural Compounds · Compound Libraries · Recombinant Proteins

This product is for Research Use Only · Not for Human or Veterinary or Therapeutic Use

Tel: 781-999-4286 E_mail: info@targetmol.com Address: 34 Washington Street, Wellesley Hills, MA 02481